



South Dartmoor Sixth Form
Prospectus 2024

Welcome

I am proud of our inclusive and welcoming Sixth Form for which community, culture and curriculum are the core foundations for every decision we make. It is our ambition that every student succeeds both personally and academically and we do this well because of the relationships we build and the expectations we set.

We offer a broad and balanced curriculum with over 30 subjects to choose from and a range of qualification types including A Levels and Vocational course options. Students have the opportunity to engage with an Extended Project Qualification in Year 13 to further support their ambitions beyond post-16 education, and we strive to ensure that every student's needs are met by offering a bespoke approach to building personalised qualification programmes for all. In addition to a thriving curriculum offer, we are passionate about our extra-curricular provision which includes volunteering, termly Sixth Form Social events, Sport and Creative Art clubs and a host of outreach opportunities with local businesses and universities; these are just some of the opportunities available to our Year 12 and 13 students.

Set within the Sixth Form Centre, we are committed to ensuring a culture of high aspiration and expectation for the entire learning community. Our learning spaces have a modern edge and promote a mature approach to post-16 learning. With an entire PC suite dedicated to independent study, as well as a beautiful and studious library, a study gallery and resource centre, students are given every chance to conduct well-planned and successful independent study time in support of their studies. We deliver a tailored Personal Development Programme (PDP), comprising of a bespoke PSHE curriculum as well as Careers, Employability and Finance to ensure that our students leave us prepared to make bold strides in the world beyond compulsory education.

Pastoral Care sits at the very heart of all that we do. We believe in enabling and supporting our students to be holistically successful in order to thrive and we achieve this through the development and nurture of respectful relationships between the Sixth Form staff team and students. We advocate the culture of a collaborative community, promoted by student voice which directly informs decision making across the Sixth Form, and we continue to celebrate the successes of our cohesive approach through excellent results, working relationships with both present students and alumni, and an undeniable buzz that warms the Sixth Form Centre daily.

It is my pleasure to welcome you to our Sixth Form. If you have any questions at all, please do not hesitate to get in touch.



Abi Slater
Director of Sixth Form



Students Content

Welcome

Sixth Form: Culture, Curriculum and Community

Our Sixth Form: at a glance

What our students say...

Personal Development Programme

Post 16 learning programme

Year 13 opportunities

What should I consider when making my choices?

Post-16 learner support bursary and transport applications

Sixth Form enrichment and extra-curricular opportunities

Ofsted

Pastoral support

Advanced Level Courses

Art (Fine Art)

Art (Photography)

Biology

Business

Chemistry

Classical Civilisation

Computer Science

Dance

Design and Technology

Drama and Theatre Studies

Economics

English Literature

French

Geography

Graphic Communication

History

Mathematics

Further Mathematics

Media Studies

Music

Philosophy and Ethics

Physical Education

Physics

Politics

Psychology

Sociology

Spanish

Vocational Courses

(These can be studied in a combined programme with A Level subjects)

Criminology

Level 3 Applied Diploma

Health and Social Care

Cambridge Technical Level 3

Extended Certificate

Music Performance, Music Technology

BTEC Level 3 National Extended Certificate

Performing Arts (Dance and Drama)

BTEC Level 3 National Foundation Diploma

Sport and Physical Activity

Cambridge Technical Level 3

Extended Diploma



“futures
are made
in the present”

Sixth Form

Culture, Curriculum and Community

We work with students as they develop an increasing control over their lives underpinned by a search for truth and knowledge, respect for self and others, an understanding of equality and social justice and a commitment to striving for excellence.

- We introduce students to the best that has been thought, written and created.
- We enable students to develop intellectual curiosity and provide a secure grounding in the skills the modern world requires.
- We prepare them for the world of work and adult responsibility, and help them to develop resilience to face life's challenges.
- We encourage students to care for and treat other humans with courtesy, dignity and respect and support them to stay mentally, physically and spiritually healthy.
- We value well-being, in terms of both happiness and health, building trusting relationships and working hard, together.
- We recognise the power of opportunity for student voice and collaboration and embrace this to both shape and direct our community in and beyond the classroom, placing students at the very heart of what we deliver.

Our vision

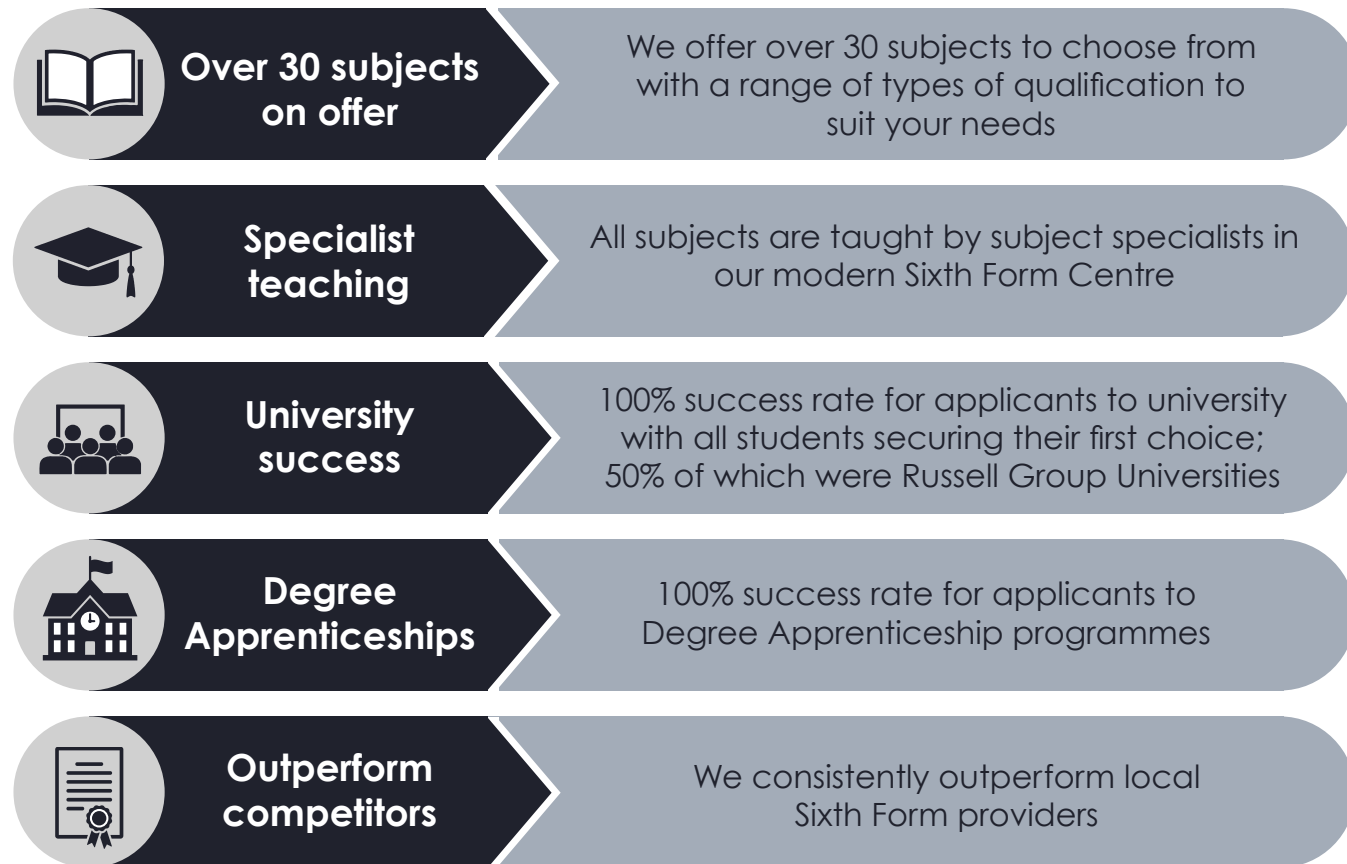
To develop intellectual curiosity and a deep love of learning that ensures students are best prepared to enter the next phase of their lives.

Our mission

To focus uncompromisingly on ensuring every individual is successful. We achieve this by:

1. Providing high quality teaching, matched to knowledge-rich curriculums, in a supportive learning environment with high expectations. We provide students with opportunities in which to excel, to empower them to make free choices as a foundation for their best possible future. **(Excellence)**
2. Creating a safe community that has at its core an understanding of deep respect for self, for others and for the environment. Trust is nurtured and strong relationships are key. **(Respect)**
3. Pursuing truth open-mindedly, seeking to help students to enquire, question and challenge. Individual advice, guidance and support to ensure progression routes are secured. **(Truth)**
4. Delivering a broad range of subjects, where high aspirations are the norm and success is celebrated, regardless of background, ethnicity, religion, gender or educational need. **(Equality)**

Our Sixth Form: at a glance



What our students say...

I made great friends with my classmates and would just say to anybody considering it: brace yourself for the demand – but it is ace!

Student, A Level Sport and Physical Education

My most enjoyable subject is, well, all of them. I find all of my subjects interesting, and the skills I gain from one I can apply to the others.

Applied Business was very well organised and was taught very well at this college.

Student, A Level Business

Chemistry is really interesting, I like that we learn the chemical ideas but also how it all fits into the real world.

Student, A Level Chemistry

Sociology is interesting as it relates to society and the social world. The discussions and debates enable me to speak and share my views about sociological topics and my learning more generally.

Student, A Level Sociology

Personal Development Programme

Our Personal Development Programme (PDP) is our bespoke provision for teaching PSHE and careers, as well as finance and employability skills that are desired by employers and universities alike, but more importantly necessary for every student to succeed on their chosen paths, beyond our Sixth Form. We deliver weekly sessions to students in Year 12 and 13 that aim to;

- Support students to develop good habits and study skills that will help them to thrive today and in the future; whatever higher education or career path they choose to take
- Develop a curiosity for the wider world and understand their place in it
- Value the importance of safe and considered life choices as well as understanding how to best take care of their health and wellbeing

As a college, we are expected to create and provide a PSHE curriculum that:

- promotes the spiritual, moral, cultural, mental and physical development of pupils at the school and of society.
- prepares pupils at the school for the opportunities, responsibilities and experiences of later life.

Our Sixth Formers are at a crucial transition point in their lives, and we are committed to preparing them to manage these changes and challenges. We have designed a curriculum that teaches the skills and knowledge they require to build strong and well-informed foundations for their bright futures. Our PDP builds on prior knowledge, provokes curiosity and is grounded in relevance for our young people, thus supporting them to secure and master knowledge and understanding for immediate and lifelong application.

We expect our students to take responsibility for their own journey through Sixth Form. To support them in meeting this expectation, our PDP curriculum is informed by student voice, and it considers how the knowledge components mentioned above are threaded through subject curriculums; not simply delivered in a weekly session and left for students to disregard.

This approach to the planning and delivery of our PDP ensures that students have the opportunity to; revisit existing knowledge and experience, learn new and valuable knowledge and practice it across a variety of contexts where appropriate, removing the risk of it becoming 'the residue of thought', as explored by Daniel Willingham in his book *Why Don't Students Like School?*



Post 16 learning programme

Advanced Levels (known as A Levels) and our Vocational subject offer are all Level 3 courses. Whatever the combination, students are required to study full-time for a period of at least two years.

All A Levels are now offered as 'linear courses'. This means that assessment of a student's knowledge and understanding of the whole course will take place at the end of Year 13. The vocational courses; Criminology, Health and Social Care, Music Performance/Music Technology, Performing Arts (Dance and Drama), and Cambridge Technical Level 3 Sport and Physical Activity, are assessed throughout the two years at various points using both examinations and coursework.

After reviewing the impact of the government reforms to A Level and AS Level courses, we have decided that students will no longer be automatically entered for AS exams. Students may choose to study a subject to AS Level only and sit the AS exams in the summer of Year 12. The AS qualification is equivalent to half an A Level and the grade students receive will count towards the UCAS points for their University application.

Single Year AS and Fast Tracking A levels in Year 13

Students have the option in Year 13 to select an additional AS subject alongside their A Level subjects or in negotiation with the Director of Sixth Form to fast track a full A level in Year 13, if the option blocks allow the desired combination.

Advanced Learning pathway – points to consider

Students are encouraged to choose up to four Level 3 courses in Year 12 and at least three of these should offer a progression to full A Level study. In Year 13 some students will drop a subject at AS Level, continuing with three subjects to gain three full A Levels.

You should choose subjects that you will enjoy and that you will be good at, that suit your future choices and that will help you in your intended career. Please see 'What should I consider when making my choices?' for further advice.

Some universities do favour certain subjects over others, such as the Russell Group universities, and if you are planning to take a particular degree choice such as Medicine, Dentistry, Veterinary Science, Architecture etc., your A Level choices will be guided by university entrance requirements.

Students will be carefully monitored throughout their Post 16 journey with regular progress reports shared with parents/carers, and the opportunity to share in your son/daughters successes at the online Progress Evenings. There will be 'mock exams' for Year 12 in November/December and June/July to ensure that students are working in line with their target grades. In addition to the Year 12 mock exams, students will engage with the mock series when in Year 13, in preparation for their final exams which take place in the summer term.

Year 13 opportunities

Extended Project Qualification - EPQ

We also offer the Extended Project Qualification as a one year Level 3 course in Year 13. This carries more UCAS points than an AS, and we highly recommend that all Year 13 students consider this option. It is highly regarded by universities and employers because of the way in which it develops independent learning skills and allows for students to undertake in-depth research in a topic of their choice.

What should I consider when making my choices?

It is important to think about why you want to take the options you hope to study. It is advised that you discuss this with the Sixth Form Team prior to your Sixth Form application or as part of the interview process, and with your tutor and a parent/carer who can help you make the right choice for your future.

Further details about courses and how they can be used for any future career or university course can be found on the following relevant examining board and other websites:

www.aqa.org.uk

www.edexcel.org.uk

www.ocr.org.uk

www.ucas.com

www.thecompleteuniversityguide.co.uk

www.informedchoices.ac.uk/degrees

Careers information can be found on the websites below:

Career Pilot: www.careerpilot.org.uk

National Careers Service: nationalcareers.service.gov.uk

The following members of staff can be contacted regarding specific option choice matters:

- **Abi Slater** - Director of Sixth Form: aslater@southdartmoor.devon.sch.uk
- **Julie Randell** - Post 16 Careers and Work Experience Coordinator: jrandell@southdartmoor.devon.sch.uk

Post 16 learner support bursary and transport applications

16-19 Bursary

Students who require support for course costs (books, equipment, educational trips and visits etc.), travel and meals can be supported through the government funded 16-19 Bursary Scheme. Students are invited to apply for access to the bursary when they have enrolled for the Sixth Form in September. More information about the 16-19 Bursary application process can be found [here](#).

Securing transport and applying for a vacant seat

South Dartmoor Sixth Form have an agreement with Devon County Transport that qualifying students will receive full or partial financial payment of their transport costs from the Learner Support Bursary Fund (following a successful 16-19 Bursary application).

Students who need to access Devon County Council provided transport in order to attend Sixth Form are required to apply for a 'vacant seat'. This process is simple and must be conducted in the Summer Term of Year 11. If your application for a vacant seat is successful and you choose to take the seat, it will be guaranteed for that academic year, requiring a new application in the Summer Term of Year 12. Click [here](#) to learn more about applying for a vacant seat.

Students will be invited to apply for this support during the summer term before enrolment at Sixth Form to ensure that transport is in place before the September induction day.

Sixth Form enrichment and extra-curricular opportunities

South Dartmoor Sixth Form is a vibrant and exciting community to be a part of.

You are invited to participate in extra-curricular activities offered by various subject faculties within our Sixth Form. We are proud of the enrichment provision we offer Year 12 and 13s and believe that it captures the interests and needs of all. Our expectations of your academic commitments are high, but we advocate balance and the importance of prioritising your physical and mental health. The programme of enrichment varies from term to term and updates will be posted on Teams and at the information stations in the Sixth Form Centre (outside the Sixth Form Office and in the Common Room).

The Sixth Form has an active and lively student leadership team who play an important role in promoting student voice and securing a positive partnership between all members of the Sixth Form community. We offer opportunities to link with the local community and businesses as well as outreach provision with local and regional universities, apprenticeship providers and access to guest speakers and webinars to ensure that students are up to date with the world of higher education and employment. For those who are interested in foreign travel and possibly even some volunteering we have run, and will continue to organise, valuable excursions such as World Challenge, Duke of Edinburgh, Ten Tors, as well as cultural excursions to France, Berlin, New York and Italy.

Whatever your area of interest, we will do our best to support you to pursue it and we strongly encourage our students to consider their own development of skills and interests in addition to their formal learning. This might be through taking up a college leadership role, such as being part of the Sixth Form Leadership Team, volunteering for a shift in 'The Bean Machine' our student run coffee bar, applying to work in the Ashmoor Sports Centre, acting as a Sports Leader within the PE department, or through involvement in the extensive music and performing arts opportunities the college offers.

Pastoral support

All Sixth Form students have access to a dedicated progress mentor who will support and guide them through their post-16 journey, from induction to graduation; supporting with attendance monitoring, academic progress, wellbeing, higher education and employment applications, exam preparation and much more.

The small and supportive nature of our Sixth Form creates a strong sense of identity as well as safety for each student, fostering an environment of security but challenge, helping each individual to realise their potential.



Ofsted

In 2021 South Dartmoor Sixth Form was Inspected by OFSTED and in that inspection the Sixth Form maintained its GOOD rating. Areas of particular note were;

Curriculum and sequencing of work:

“Sequences of work challenge Sixth Form students and build on what they already know. Sixth Form students have many different course choices, both academic and vocational.”

Carers support and guidance:

“Careers education is a strength. Visits by, and to, employers and universities help pupils to understand more about future opportunities. Older pupils and Sixth Form students receive individual guidance. This helps them make decisions about their futures.”

Culture:

“The voluntary work that Sixth Form students do helps them develop their skills and interests.”



Advanced Level Courses



Art (Fine Art)

What will I study?

The course starts with you exploring different skills and approaches to observation through skills based workshop lessons exploring a range of processes and responding to a central theme in a personal way, developing you as an individual artist. Lessons are structured to your interests and passions, which we are sure you will find motivating and confidence building. You will explore a range of modern and historic artists to inform your practice.

Your sketchbook will document your evolving skills, experiences and ideas, which you will record through your own style of note taking.

The second year is supported by group presentations, which strengthen your analytical and communication skills through critique and written work. This is great preparation for Higher Education. Towards the end of the course you are given time to prepare for a 15 hour exam. The preparation time forms a personal project responding to a chosen exam theme; the 15 hour exam time is used to create a final piece which completes this final project.

How will I be assessed?

Component 1: Personal Investigation externally moderated - 60% of the A Level

This is where you will do the workshop/skills development around a central theme which you then personally extend, develop and respond to.

Component 2: Externally set and moderated assignment - 40% of the A Level

You will independently develop a personal response from a selection of themes set by the exam board. You will prepare work that develops skills, ideas and outcomes in the lead up to a final 15 hour practical exam.

Exam board AQA

Entry requirements

6 GCSE grades, Level 9-4.

Subject entry requirements

Students should have at least a Level 5 GCSE in Art and Design or related subject area.

It is important that applicants demonstrate a keen interest and commitment to Fine Art, and an ability to work independently.

Specialist facilities

Six dedicated Art rooms and studio space. A large darkroom and photographic facilities with full Adobe suite is also accessible on the course.

A range of materials and access to Technology to promote ambitious outcomes and experimentation.



Art (Photography)

What will I study?

Emphasis is placed on learning the visual language of photography. You will learn a broad range of photographic techniques - both analogue and digital - exploring traditional darkroom and digital Photoshop techniques. The course will teach you to appreciate photographic theory and practice and to understand the work of artists and pioneers in the development of the photographic medium.

The first year of the A Level programme involves an introduction to a variety of skills both traditional and digital. You will have the opportunity to develop skills using various techniques and equipment such as using 35mm SLR cameras and a traditional dark room to print photographs. During the year you will begin to compile a portfolio based on a number of themed projects. You will be required to support your practical work with a workbook documenting the progress of your projects through written and visual elements. You are also required to research other artists' work to support your own ideas and practice.

The second year draws on the knowledge and skills you have gained during year one in the form of both coursework and an externally set examination. 60% of your mark is determined via the creation of a coursework based Personal Investigation consisting of a major in-depth, practical, critical investigative project/theme-based portfolio. You will be required to carry out an extended critical and contextual written analysis. The externally set examination requires you to independently develop a personal response to one of a varied range of stimuli. You will develop your response during a preparatory study period culminating in a 15 hour controlled assessment realising your ideas with a final piece.

How will I be assessed?

60% of your mark is based on your Personal Investigation coursework, which is an in-depth, practical and investigative-based portfolio. You will also be required to carry out critical and contextual written analysis.

The externally set examination represents the other 40%, which requires you to independently develop a personal response to one of a range of themes. You will develop your response during a preparatory study period, building up to a 15 hour controlled assessment realising your ideas with a final piece.

High attendance and punctuality are particularly crucial to success on the course, as well as determination and consistent effort.

Exam board AQA

Entry requirements

6 GCSE grades, Level 9-4.

Subject entry requirements

Students should have at least a Level 5 GCSE in Photography or related subject area. It is important that applicants demonstrate a keen interest and commitment to Photography.

Specialist facilities

Fully equipped darkroom and a film processing room.

Two digital suites with 50 dedicated computers.

The college has a site license for Adobe creative suite 5.5. This includes Adobe Photoshop which is installed on all Art department computers.

College DSLR, compact and 35mm film cameras that students have access to in college to use in our dedicated photography studio or on personal shoots outside of college.

We also run field trips to various locations and galleries and there are a number of opportunities to exhibit your work publicly in the local community.

Career Pathways
A qualification in Fine Art is highly valued by many employers. It is applicable to almost any progression in Art and Design.
It is also an excellent subject to complement many areas, such as:
Architecture
Interior Architecture
History of Art
Film
Prosthetics and Theatrical Makeup
Art Therapy
Education

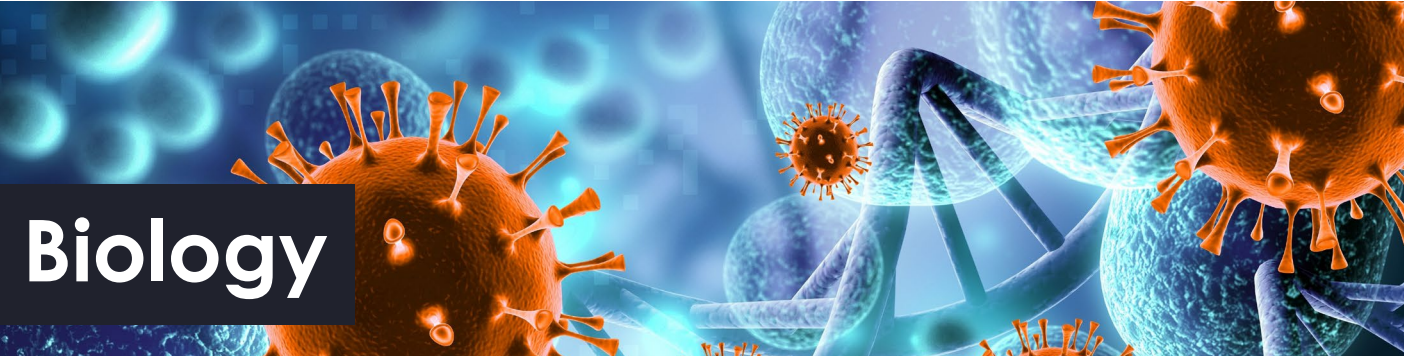
Degree Courses
2D and 2D animation
3D design
Applied arts
Architecture
Art history
Art therapy
Ceramics
Digital media
Fine art painting
Fine art printmaking
Fine art sculpture
Games design
Illustration
Industrial design
Interior architecture and design
Visual communication
Visual effects for film and television

Average Salaries
Art curator £30,637
Teacher £32,000
Art Director £49,441
Gallery Manager £29,595
Art Dealer £32,631
Art Therapist £47,129
Community Arts worker £30,000
Art Critic - £31,721
Printmaker £24,065
Copywriter £35,000

Career Pathways
Successful completion of the course can lead to further study or employment in all areas of lens-based and visual arts including art foundation, media, film, multi-media, graphic design, journalism, advertising, illustration and PR.
Photographic and visual skills will be beneficial to a wide range of courses and careers in this image based digital age.

Degree Courses
Animation
Commercial photography
Creative and editorial photography
Digital media
Fashion photography
Film and television
Film and visual culture
Forensic photography
Graphics with photography
Medical photography
Visual communication

Average Salaries
Photographer £23,000
Ariel Photographer £39,599
Press Photographer £25,000
Television camera operator £32,090
Film/Video editor £32,000
Shoot Producer £40,155
Camera Technician/Operator £46,540
Wedding photographer £35,000
Sports photographer £35,000
Forensic photographer £27,000
Royal Navy photographer £36,000



Biology

What will I study?

Biology is an exciting and challenging academic subject. It is an expanding and rapidly changing area of study, with such further topics as: medicine, biotechnology, genetics, microbiology and many more. It complements chemistry, physics, psychology, sport science and geography.

Content is split into six teaching modules:

Module 1: Development of practical skills in biology (assessed throughout the course).

Module 2: Foundations in biology

Module 3: Exchange and transport

Module 4: Biodiversity, evolution and disease

Module 5: Communication, homeostasis and energy

Module 6: Genetics, evolution and ecosystems

How will I be assessed?

Students' knowledge, application and practical skills are continuously assessed throughout the year using in-lesson strategies, home-learning and end of topic tests. There are regular assessments based upon exam-style questions to provide both students and staff with a measure of progress. Mock exams are also used to provide feedback on students' exam technique and application of knowledge, both of which are essential for success in this purely exam based course.

For the A Level course, there are external examinations at the end of Year 13. Students have core practicals that are integral to the course and students will be examined on their ability to plan, analyse and evaluate experimental designs within the end of course assessments. Students have their practical skills assessed against the Common Practical Assessment Criteria and will be given a 'pass' if these are of the required standard. This Practical Endorsement will be reported alongside the results.

Career Pathways
Non graduate jobs may include healthcare jobs (including nursing training), some forms of laboratory work (e.g. lab assistant in a school), work in a dental surgery as an assistant, any job requiring attention to detail and practical skills.
Graduate jobs may include:
Research scientist
Medical writing
Pharmaceutical industry
Psychologist
Sports scientist
Physiotherapist
Toxicologist

Degree Courses
Audiology
Infection and immunity
Biometrics
Proteomics
Biomedical science
Neuroscience
Biochemistry
Pharmacology
Environmental sciences
Experimental psychology

Average Salaries
Audiologist £41,497
Doctor £50,000 - £80,000
Biometric engineer £38,000
Nurse £35,000
Neuroscientist researcher £35,000
Pharmacist £48,000
Midwife £35,000
Clinical psychologist £32,000
Physiotherapist £55,000
Vet £45,000

Exam board OCR

Entry requirements

6 GCSE grades, Level 9-4.

Subject entry requirements

At least:

In triple science – Level 6 in GCSE Biology, as well as a Level 6 in at least one other science (GCSE Physics or Chemistry)

In GCSE Combined Science Level 66

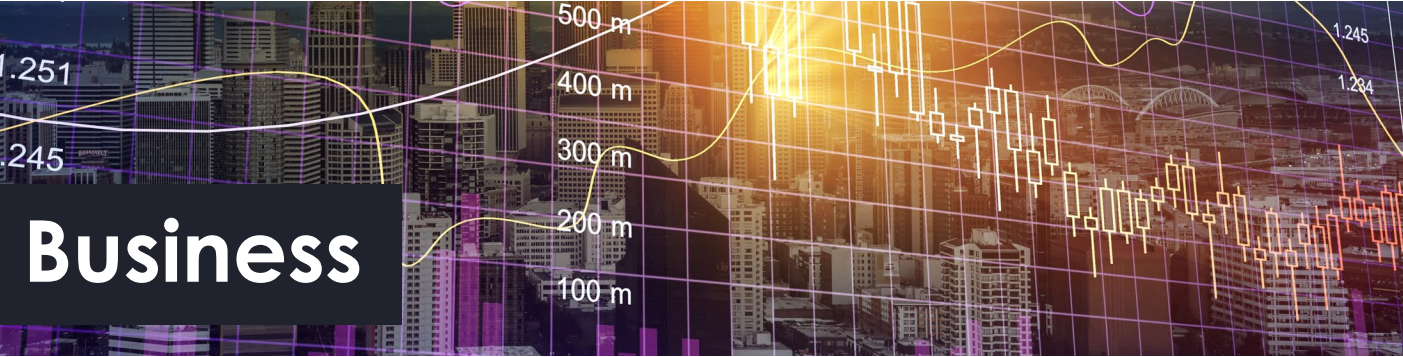
Level 5 in GCSE Mathematics

Level 5 in GCSE English

Specialist facilities

There are three dedicated Biology laboratories containing a wide range of apparatus purely available to the Sixth Form biologists, including two high power binocular microscopes that were provided by the Royal Society.

The library has a fantastic range of reference materials which are available for extension or self-led studies.



Business

What will I study?

Studying A Level Business will give you an insight into the business world which is ever changing and very exciting. The uncertainty of training for jobs which do not yet exist is made much easier when you have a business qualification behind you. A third of graduates regret the degree subject they choose and feel a business related practical degree would have been a more appropriate choice for further study.

Furthermore Business graduates earn considerably more money than most other graduates, well above the national average. A Level Business is an essential foundation for many, if not all careers! There are four themes that make up the A Level in Business. These are: Marketing and People, Managing Business Activities, Business Decisions and Strategy and Global Business.

How will I be assessed?

100% examination based with three written examinations at the end of the A2 year. To be successful students need to be able to think logically and analyse and discuss real situations using business concepts.

Paper 1 (35%) - Marketing, people and global business.

Paper 2 (35%) - Business activities, decisions and strategy.

Paper 3 (30%) - Investigating business in a competitive environment.

Exam board Edexcel

Entry requirements

6 GCSE grades, Level 9-4.

Subject entry requirements

GCSE Mathematics and English.

Specialist facilities

We have two dedicated Business related rooms in the Sixth Form centre.

The Library offers a range of textbooks and computers to support your studies.

We make extensive use of ICT facilities, including many specialist websites.

Career Pathways
Non graduate jobs and self-employment opportunities may be available to successful Business A Level students as they will have an insight into the business world. Positions do exist in management and administration for those with A Levels in retail, banking, insurance and manufacturing industries.
There are some phenomonal school leaver programmes being developed by local business employers in business admin, accountancy and many more.
Graduate jobs may include:
Banking Manager
Chartered Accountant
Distribution/Logistics Manager
Investment Banker
Management Consultant
Marketing or Sales Executive
Personnel Officer
Public Relations Officer
Retail Buyer or Manager

Degree Courses
Business Studies
Marketing
Accounting
Finance
Management
Human Resource Management
Operations Management

Average Salaries
School leavers accountancy starting salary £18,000 - £24,000
Once qualified after 5 years £35,000 - £50,000
Senior qualified accountant £60,000 - £90,000
Operations Management £41,000
Chief Executives £104,000
Brokers £102,000
Human Resource Managers £57,200



Chemistry

What will I study?

Chemistry has always been a fascinating subject and the history of chemistry goes back a long way from the alchemy of the dark ages to the pioneering experiments of Rutherford, Geiger and Marsden in the early 20th century. Chemistry is an important part of everyone's life, whether they realise it or not, and chemists are found in a wide variety of organisations; from engineering to medicine to environmental analysis.

You will study the following topics:

- Module 1 – Development of practical skills in chemistry
- Module 2 – Foundations in chemistry
- Module 3 – Periodic table and energy
- Module 4 – Core organic chemistry
- Module 5 – Physical chemistry and transition elements
- Module 6 – Organic chemistry and analysis

How will I be assessed?

Student's knowledge, application and practical skills are continuously assessed throughout the year using in lesson strategies, home learning and end of topic tests. There are regular assessments based upon exam style questions that provide students and staff with a guide to the progress being made. Students will be externally assessed for the final A Level at the end of Year 13.

Students have core practicals that are integral to the course and students will be examined on their ability to plan, analyse and evaluate experimental designs within the end of course assessments. Students have their practical skills assessed against the Common Practical Assessment Criteria and will be given a 'pass' if these are of the required standard. This Practical Endorsement will be reported alongside the results.

Career Pathways
Non graduate jobs may include: Lab assistant Dental assistant Veterinary assistant Graduate jobs may include: Analytical chemist Biomedical scientist Chemistry teacher Colour technologist Industrial research scientsit Materials engineer Process development scientist Doctor Pharmacist Forensic scientist Vet Dentist

Degree Courses
Analytical chemistry Biochemistry Biomedical science Chemical engineering Forensic Dentistry Zoology Earth sciences Geology

Average Salaries
Pharmacist £48,000 Chemistry teacher £35,000 Doctor £50,000 - £80,000 Nurse £35,000 Geologist engineering £30,000 Dentistry £35,000 Forensic scientist £30,000 Analytical scientist £30,000 Surgeon £80,000 Vet £45,000

Exam board OCR
Entry requirements

6 GCSE grades, Level 9-4.

Subject entry requirements

At least:

In triple science – Level 6 in GCSE Chemistry, as well as a Level 6 in at least one other science (GCSE Biology or Physics)
In GCSE Combined Science – 66
Level 5 in GCSE Mathematics and English

Specialist facilities

There are three dedicated chemistry laboratories, equipped to a high standard with a very wide range of modern equipment.

In addition, the Library has a range of reference materials which are available for extension or self-led studies.



Classics: Classical Civilisation

What will I study?

Classical Civilisation offers students the chance to study some of the greatest cultures in the ancient world, including the earliest texts ever created in western civilisation. You will learn about the politics, stories and societies that have shaped the world we live in, such as the ancient Romans, Greeks and Persians. There will be gods, monsters, tyrants, soldiers, dictators, servants, slaves; a real insight into societies that flourished thousands of years ago.

No prior study of the ancient world is necessary. Of greater importance is enthusiasm for the ancient past and an enquiring mind. You will study epic stories, controversial legal trials, famous plays, letters written by some of the most influential politicians and leaders of all time (like Caesar, Pompey, Cicero), as well as archaeological evidence such as buildings, temples and pottery. If you are passionate and curious about ancient societies, then this will be a great subject for you.

How will I be assessed?

There are three exams and no coursework.

The World of the Hero - 40% of the total A Level.

An in-depth study in translation of Homer's Odyssey and Virgil's Aeneid. These texts contain famous stories such as the Trojan Horse, the Cyclops, the Sirens, the love of Aeneas and Dido, and Odysseus' and Aeneas' journeys to the Underworld. Key themes include the importance of family, glory, hospitality, justice, fate and revenge.

Invention of the Barbarian- 30% of the total A Level.

How the Ancient Greeks developed their own identity by defining themselves against the Barbarians. We explore Herodotus' Histories, the Plays 'Persians' and 'Medea' and the importance of the Persian Wars, as well as the myths and portrayal of Amazons and Centaurs in Greek Art.

Beliefs and ideas - 30% of the total A Level.

Politics of the Late Republic - The background of the late Republic, Julius Caesar the politician and dictator, Cicero as political philosopher, author and orator, Cato and the Politics of the Optimates. This unit explores some of the great questions of Politics - how to balance the rights of the citizen and the security of the state, the power of the rich and needs of the masses, the motivation of politicians and the means by which they achieve them.

Students learn to think logically, and to compile and evaluate evidence both orally and in writing.

Career Pathways
Classicists can make their way into careers as diverse as: Lawyer/solicitor Academic researcher Archivist Archaeologist Heritage manager Civil Service Gold Dealing Teacher Broadcast or newspaper journalist Editorial assistant Politician Accountancy Public Relations Museum education officer Academic librarian Gallery curator Genealogist Arts administrator

Degree Courses
Archaeology Ancient History History English Literature Art History Classics Recent Classics students have gone on to study at top universities such as York and Cardiff.

Average Salaries
Trainee lawyer £20,000 - £30,000 potentially rising to over £100,000 Qualified teacher £28,000 - £43,000 Archeologists starting salaries £21,000 - £25,000 Broadcast journalist £33,000 University lecturer £40,000



What will I study?

The course will provide you with valuable skills in a range of programming environments, how we use programming languages to solve a range of problems and how digital technology is used by others, particularly the moral, ethical, legal and cultural opportunities and risks.

The basis of this course is computation, both in theory and practice. You'll start off by developing practical skills in a range of programming languages principally Python and pseudocode. Then you'll move on to learn how software interacts with hardware; in particular the role of the operating system, data structures and processes. Later, you will discover how different types of software drive the digital economy and digital security.

Year 1 study:

You will be introduced to the basic principles of: hardware and communication; logical operations; data transmission; data representation and data types; data structures; organisation of data; database systems; the operating system; algorithms and programs; principles of programming; systems analysis; software engineering; program construction; the need for different types of software systems and their attributes; practical programming; data security and integrity processes; and an introduction to the economic, moral, legal, ethical and cultural issues relating to computer science.

Year 2 study:

Component 1 Programming and System Development (exam) 40%

Component 2 Computer Architecture, Data, Communication and Applications (exam) 40%

Component 3 Programmed Solution to a Problem (coursework) 20%

The aim of this area of study is to allow you to investigate, design, prototype, refine the design, implement, test and evaluate your own solution to a substantial software problem chosen by you. It requires you to carry out two different kinds of practical activity conducted over a minimum of 72 guided learning hours: a written report and software development (evidenced in annotated listings and test runs).

How will I be assessed?

You will be assessed regularly on practical work and given feedback on your progress. You will also be assessed regularly on technology terminology. Discussions and presentations are a vital part of our assessment process and you will be expected to contribute to those, and also to practical exercises.

Career Pathways
Big data engineer Applications or network architect Web developer Database administrator Computer hardware engineer Computer software engineer Data security analyst Information systems security manager Heath information technology Statistician Business intelligence analyst Computer and information research scientist Systems engineer Computer support specialist Mobile application developer

Degree Courses
A qualification in Computer Science is highly valued, and is an excellent subject to complement courses such as Physics, Mathematics or any technology-based course. Degree courses in computing or computing related subjects include: Information Technology and Information Systems Computer Science Information Science Systems and Network Administration Software Engineering Computer Engineering Cybersecurity

Average Salaries
Computer programmers £82,000 Database architects £87,000 Information security analysts £90,000 Computer network architects £105,700 Computer and information systems managers £140,000



What will I study?

A Level Dance is a specialist Performing Arts course which provides students with the opportunity to broaden their artistic experience through Dance. Students will gain experience of performing and choreographing with a view to appreciating professional work. The theoretical aspects of A Level Dance offer detailed knowledge in a number of specialised areas.

Component 1: Choreography & Performance

- Solo performance linked to a specified practitioner within an area of study
- Performance in a quartet
- Group choreography

Component 2: Critical Appreciation

Knowledge, understanding and critical appreciation of two set works:

- One compulsory set work within the compulsory area of study (Rambert Dance Company).
- One optional set work within the corresponding area of study, from a choice of four (Independent Contemporary Dance Scene).

How will I be assessed?

Component 1

Practical examination between March and May
Worth 50% of A Level
Examined in second year of course

Component 2

2½ hour written paper made up of short answer questions and essays
Worth 50% of A Level
Examined in second year of course.

Future endeavors requiring creative thinking and collaboration with colleagues or members of the public are well suited for students who have studied Dance A Level; Dance offers a wide range of transferable skills.

Sixth Form students at South Dartmoor Community College go on to study dance at leading universities and conservatories.

Career Pathways
Non graduate jobs may include: Teaching Support - Dance School Administrative roles - Arts Leadership - Community Arts Graduate jobs may include: Teaching - Primary/Secondary Lecturing - Further/Higher Education Performing/Choreography Arts administration Community dance artist Dance critic Dance or arts therapist Arts development officer Physiotherapist

Degree Courses
BA (Hons) Drama with Dance BA (Hons) Dance and Choreography BSc (Hons) Sport, Physical Education and Health (Dance) BSc (Hons) Dance Science BA (Hons) Dance and Musical Theatre BA Theatre Production

Average Salaries
Dancer/Choreographer £39,520 Teaching profession £30,160 Arts officer/producer/director £50,440



Design and Technology

What will I study?

The course enables you to combine an understanding of materials and manufacturing processes with your own creative visions by taking charge of the design process.

You will develop analytical and evaluative skills alongside drawing and practical abilities, giving you the power to solve design problems.

If you enjoy sketching, thinking creatively and problem solving this is the course for you.

The course provides you with the opportunity to be imaginative, experimental and express ideas using different media and techniques. You will learn to develop a range of skills including manufacturing techniques, design skills, 3D modelling and the use of CAD software. Topics covered include iterative design, technical drawing, consumer requirements and design principles.

You will be encouraged to become an independent learner and will gain an understanding of the professional design process and how experts operate through your project work.

How will I be assessed?

Component 1: Written examination - 3 hours. 50% of the qualification.

Component 2: Design and make a project - approximately 80 hours. 50% of the qualification. You can select any project area you would find interesting, so there is a chance to pursue your passions!

Exam board WJEC
Eduqas

Entry requirements
6 GCSE grades, Level 9-4.

Subject entry requirements
GCSE English and Maths. You will need to have achieved a minimum of Level 5 in GCSE Design and Technology, and ideally a Level 5 in Maths and Science.

Specialist facilities
Students will have access to all areas of the department as and when appropriate. However, the Technology Clean Area (TCA) will be the students' main teaching base. The room is equipped with network computers, digital projection facilities and interactive whiteboard, allowing for the production of accurate, interactive and professionally produced coursework. Access to CAD/CAM facilities by students within the department will be an integral part of the AS/A2 course.



Drama and Theatre Studies

What will I study?

Successful Theatre Studies' students will be regarded by universities and employers as excellent communicators, as people who are committed and reliable team members, able to respond positively under pressure. They will be people who are confident and emotionally intelligent and have a sound knowledge of theatre.

We have a fine reputation of excellent student work at A Level Drama & Theatre Studies. Student practical work has been selected to be filmed as A grade examination exemplar material. Any student who wishes to work with people, leading and managing teams or work in theatre should seriously consider the course. Students will develop their co-operative and creative skills.

The structure of the course is designed to give students the opportunity for lots of practical work through set texts and devised drama. Students will be required to undertake a degree of theatrical research and academic enquiry to support the practical work.

How will I be assessed?

AQA's A Level in Drama and Theatre consists of two components that are externally assessed and one component that is assessed by the centre and externally moderated by AQA. The components include:

Component 1: Drama and Theatre: study of two set texts and live theatre study (written assessment)

Component 2: Creating Original Drama (practical)

Component 3: Making Theatre (practical)

Exam board AQA

Entry requirements
6 GCSE grades, Level 9-4.

Subject entry requirements
You will need to have achieved a minimum of Level 5 in English Literature. GCSE Drama would be beneficial. Enjoyment of performance and/or design and the appreciation of live theatre is essential.

Specialist facilities
We are very fortunate to have three specialist Drama Studios. These provide a superb working environment.

Students are required to take part in theatre visits and workshops and there will be opportunities to get involved in extra-curricular activities.

Career Pathways
Architecture Product/industrial/interior design Graphic design Engineering Software tester Disaster relief specialist Rehabilitation engineer Games designer Prosthetics technician Animator Special effects director Artificial Intelligence (AI) Apprenticeships including engineering, theatre set carpenter, mechanic, plumber,

Degree Courses
Product Design Technology Architectural Technology and Design Aeronautical Engineering Automotive Engineering Civil Engineering Design Electrical and Electronic Engineering Engineering Education Fashion Design and Technology Games Technology Interior Architecture Industrial Design Interior Design Mechanical Engineering Robotics

Average Salaries
Interior designer £24,967 Games designer £32,512 Industrial designer £32,090 Architect £43,405 Civil engineer £37,167 Mechanical engineer £42,670 Electrical engineer £38,402 Robotics £38,102 Fashion designer £28,274 Aeronautical engineer £44,309

Career Pathways
Non graduate jobs may involve working in an administrative role within a theatre, leading and managing teams of people. Graduate jobs may include: Actor Drama Therapist Secondary School Teacher Theatre Director Theatre Stage Manager Wardrobe Manager Arts Administrator Community Arts Worker Journalist Programme Researcher Television Production Assistant

Degree Courses
BA Drama BA Acting BA Theatre Studies BA Theatre Production BA Performing Arts BA Musical Theatre Performance BA Stage Management and Technical Theatre BA English Literature BA Journalism BA Creative Writing LLB (Hons) Law

Average Salaries
Actor/Entertainer/Presenter £58,240 Arts officer/Producer/Director £50,440 Design occupations £32,240 Marketing associate professionals £33,800 Secondary Education teaching professionals £44,720 Authors/Writers/Playwrights £35,360 Legal professionals £87,880



Economics

What will I study?

Economics covers many of the major topics of discussion in the world today; Government support and how we will pay for dealing with the Covid 19 pandemic; Globalisation, international trade and the growth of protectionism; Brexit; how resources are allocated and accounting for social externalities such as inequality, pollution and global warming.

Economics prepares you for the world of work, including jobs in business, industry, civil service and government. On average Economics graduates earn 60% more than non-graduates which is higher than most other graduates. (ONS)

How will I be assessed?

A Level Economics is assessed with three examinations, each lasting two hours.

Paper 1 (35%) is based on markets and business behaviour. Questions will be focused on the nature of economics, how markets work, market failure, government intervention, business growth, objectives, revenues, costs and profit, market structures and the labour market.

Paper 2 (35%) is based on the national and global economy. Questions will be focused on business growth, business objectives, revenues, costs and profit, market structures, labour market, government intervention, international economics, poverty and inequality, emerging and developing economies, the financial sector and the role of the state in the macro-economy.

Paper 3 (30%) is based on microeconomics and macroeconomics. This paper is synoptic and questions will be based on any of the themes linked to papers 1 and 2.

Exam board Edexcel

Entry requirements

6 GCSE grades, Level 9-4.

Subject entry requirements

Level 5 or higher in Mathematics and English.

You should be interested in current affairs and regularly watch the news and read newspapers.

Specialist facilities

We have two dedicated Business related rooms in the Sixth Form Centre. The Library offers a range of textbooks and computers to support your studies. We make extensive use of ICT facilities, including many specialist websites.



English Literature

What will I study?

English Literature students will be introduced to a range of poetry, drama, novels and short stories. The course features early examples of the genres and modern texts. Throughout the course students will be encouraged to broaden their experience of Literature through wider reading and self-supported study.

The course aims to promote a lively and informed appreciation of literature. Through reading, discussion and essay writing, students will gain confidence and skill in forming and communicating responses to texts. Students will learn to write interesting, detailed assignments which reflect their increasing experience and knowledge of literature. The English Literature A Level is the preferred option for many Universities as it gives you experience in analytical, interpretive and evaluation skills. It is a facilitating course which means it will help with a variety of degree courses.

How will I be assessed?

Paper 1: Tragedy Through Ages: Othello, Keats and Death of Salesman. (40% of overall grade)

Paper 2: Social and Political Protest Writing: The Kite Runner, The Handmaid's Tale and Songs of Innocence and Experience. (40% of overall grade)

Coursework:

2 x 1500 word essays. The first will respond to a novel of your choice and the second will respond to a collection of poetry of your choice. You'll analyse both of these texts through a critical lens.

Exam board AQA

Entry requirements

6 GCSE grades, Level 9-4.

Subject entry requirements

Level 6 or above in English Literature.

Most Importantly: An enthusiasm for, and commitment to, reading and discussing Literature.

Specialist facilities

The English Department offers expertise and enthusiasm. Students will be advised on wider reading and a variety of fiction is available from the College Library and the English Department.

Career Pathways
Non graduate jobs may include work in politics, banking and insurance. Graduate jobs may include: Accountancy Actuarial work Corporate, commercial and investment banking Insurance underwriter Investment analyst Management consultant Market research executive Political party research officer Statistician Trader

Degree Courses
Economics Accounting Law Finance

Average Salaries
According to edvoy.com Economics graduates just trail the doctors, dentists and vets with average starting salaries, with 10% of Economics graduates earning over £100,000 within 10 years of graduating.

Career Pathways
Non graduate jobs may include marketing or sales assistant, jobs requiring a lot of communication, trainee news reporter, library assistant, or tour guide. Graduate jobs may include teacher of English as a foreign language, Law, Journalist, Primary/Secondary school teacher, Editor, Author or Publisher.

Degree Courses
BA English and Classics BA English and Politics BA Law BA Journalism BA Public relations BA Publishing

Average Salaries
Marketing professionals £33,800 Primary/secondary teaching £40,560 Public relations £40,040 Authors/writers £35,366 Solicitor/law professionals £57,200 Police service £47,320 Archivist £30,000



French

What will I study?

The course will convert your GCSE pass to a high level of spoken and written fluency and grammatical accuracy. You will develop an in-depth knowledge of the society and culture of French speaking countries. You will study social issues and trends in France, political and artistic culture and grammar. You will also study a novel and a film, enabling you to improve your understanding of culture and the language at the same time.

French is a fascinating course which links well with many other subjects, from Politics, History, English Literature and Music to Sociology and more.

How will I be assessed?

The examination comprises three aspects.

Paper 1 (40%) is a mixed skill paper which examines listening, reading and writing in French.

Paper 2 (30%) is a writing paper which requires full answers in French in response to a set text and a film.

Paper 3 (Speaking, 30%) includes discussion of aspects of French-speaking society: current issues, artistic culture in the French-speaking world or aspects of political life in the French-speaking world.

Exam board Edexcel

Entry requirements

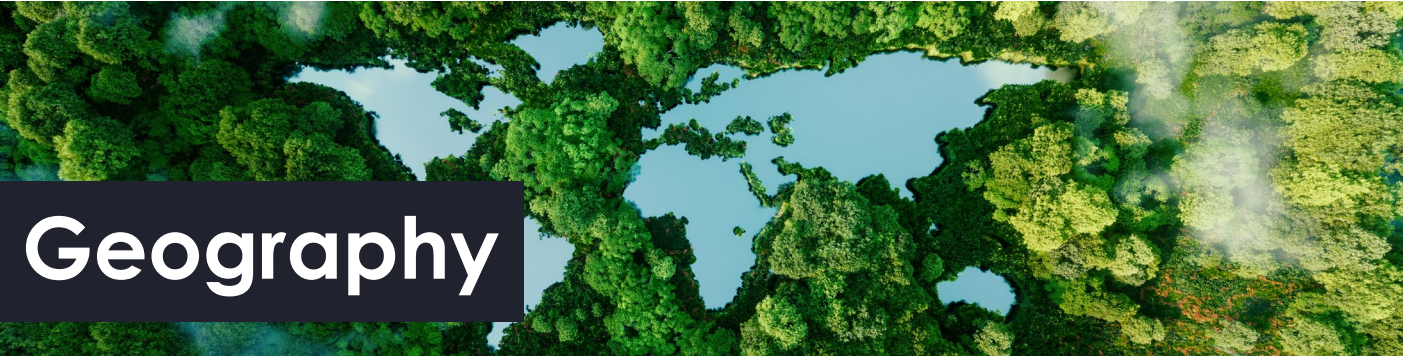
6 GCSE grades, Level 9-4.

Subject entry requirements

English at Level 5 and Level 6 in French.

Specialist facilities

Fully equipped Modern Language classrooms.



Geography

What will I study?

The world in which we live is changing. Global awareness of the details that are changing are shared with us all via 24/7 media. Geography allows you to see why and how it is happening. Sir David Attenborough has said that “No one will protect what they don't care about and no one will care about what they have not experienced”. This course continues to open your eyes to the fascinating detail of our planet and the way its inhabitants choose to interact with it and themselves.

Areas of study include such issues as tectonic processes and hazard management; landscape systems, processes and change – including optional sub-topics from which students choose one from two: glaciated landscapes and change or coastal landscapes and change; the water cycle and water insecurity; the carbon cycle and energy security, climate change futures; superpowers and global development. Many renowned commentators have said (sic) that “the biggest threat to this planet is the belief that someone else will fix it”. This Department consistently develops ethically and socially aware agents of change, helping them take their environmental consciences with them to university or the world of work.

You will also get the opportunity to undertake a personal investigation that will evaluate and reflect on fieldwork investigations. The usual highlight of the course is the residential field trip to the Isle of Arran with an optional enrichment trip to Iceland being planned.

How will I be assessed?

There are four units for assessment. The first three units are formal examinations. Papers 1 and 2 are two hour exams that test candidates on some of the topics listed above. Paper 3 is an exam lasting one hour and forty-five minutes and is a synoptic assessment of geographical skills, knowledge and understanding. The final unit is the coursework investigation that is internally assessed and externally moderated. The coursework involves producing a written report of 3000–4000 words that incorporates fieldwork data (collected individually or as part of a group) and own research and/or secondary data.

Exam board Edexcel

Entry requirements

6 GCSE grades, Level 9-4.

Subject entry requirements

Grades to include Geography and Science, and English and Mathematics at Level 5 or above.

Specialist facilities

Geography lessons will be taught on the main campus using specialist rooms. A wide range of textbooks and resources are used on the Geography course. Subscription to “Topic Eye” and the purchase of revision guides is encouraged.

Career Pathways
Diplomatic service International aid/development worker Marketing executive Sales executive Business and finance Law Science and engineering Travel and tourism Language skills can be used in almost any career, and particularly in businesses that trade internationally. You keep the doors wide open with a language qualification.

Degree Courses
A large number of university courses can be supplemented by a Modern Language, thus opening up career opportunities. Degree course may include: French and History French and Economics French and Politics French and a second language International Business Management and French

Average Salaries
On average, people who use languages in their jobs earn 10% more. Generally, people who speak another language get better jobs and salaries than those who only speak their own language.

Career Pathways
With the business world waking up to the importance of environmental accountability and with sustainable development projects gaining credible status, relevant, stimulating and interesting jobs are growing fast. Graduate jobs may include cartographer, disaster and logistics manager, environmental consultant, geographical information systems manager, remote sensing scientist, secondary school teacher, town planner, transportation planner, local government administrator, nature conservation officer, tourism officer, urban general practice surveyor, aid worker, or travel writer.

Degree Courses
Joint Honours degrees along with: Environmental Science Sociology International Relations Geology Anthropology Politics Business Marine Sciences Law or Single Honours in: Geography Earth Sciences Marine Sciences Disaster Management

Average Salaries
Disaster risk manager £50,000 - £80,000 Entry level environmental consultant £30,000 Conservationist £37,000 Foreign, Commonwealth and Development Office £30,000 - £150,000



Graphic Communication

What will I study?

You will begin the course developing fundamental skills and knowledge integral to the world of Illustration and Design. Traditional and contemporary processes are explored using techniques and process driven workshops to develop your digital skills using industry standard software including Adobe Photoshop and Illustrator in addition to traditional mixed media responses. Areas covered include typography, thumbnail sketches, layout design and mixed media, extending these further through digital media.

You will research a range of illustrative and graphic styles, applying this knowledge to develop your individual practice. The research and development of your concepts and designs are gathered in your sketchbook. In the process of constantly reflecting on your creative development, you will become skilled in communicating ideas visually to meet your clients' needs. By the end of the first year you will have produced a body of work which documents your creative thinking and design process.

You will work towards a coursework project and exam project. You will also give a presentation, based on analytical skills involving both discussion and written work.

How will I be assessed?

Component 1: Personal investigation. Externally moderated - 60% of the A Level
The personal investigation consists of an investigative project theme-based portfolio. You will be required to carry out an extended critical and contextual analysis resulting in a portfolio.

Component 2: Externally set and moderated assignment - 40% of the A Level
You will be required to independently develop a personal response to one of a varied range of themes. You will be given time to develop your response during a preparatory study period culminating in a 15 hour sustained focus study.

Exam board AQA

Entry requirements

6 GCSE grades, Level 9-4.

Subject entry requirements

Students should have at least a Level 5 GCSE in Art and Design or related subject area. It is important that applicants demonstrate a keen interest and commitment to design.

Specialist facilities

The Sixth Form Centre offers an inspiring learning environment that stimulates creativity and collaboration where facilities will be accessed via a dynamic mix of break-out spaces and studio rooms. The art department computers are installed with Adobe design software (including InDesign, Illustrator and Photoshop).

Large format printer, negative scanner and flatbed scanner, dark room and photographic facilities are also available.



History

What will I study?

If you enjoy discussing and debating major events of the past and making connections between those events and the world we live in, then History will be a great option for you. We live in a world where we are bombarded with information, much of it mis-information. History will help you navigate that world. We are really passionate about what we do and we hope to make you as enthusiastic about the past as we are.

The course will consist of both European and British History, as well as Modern and Early Modern History (universities look for you to have studied a range of periods). Skills you will develop include exploring the significance of events and key individuals, the causes and consequences of major historical events, change and continuity across time periods, and also historical interpretations of the past.

You will also develop the ability to analyse and evaluate historical sources, and to debate and discuss relevant issues. The course is excellent preparation for university both in terms of the content you cover and the research/study skills you will develop.

How will I be assessed?

There are three exam papers that will be taken at the end of Year 13 for the full A Level:

Paper 1 - Germany 1918-1989 (30%)

Paper 2 - Italy 1911-1946 (20%)

Paper 3 - Rebellion and Disorder under the Tudors 1485-1603 (30%)

There is also one piece of coursework worth 20% of your final grade. There are two exam papers for the AS accreditation, each paper is worth 50% of the overall AS Level. Should you opt for this, these exams would be taken in May of Year 12.

Exam board Edexcel

Entry requirements

6 GCSE grades, Level 9-4.

Subject entry requirements

GCSE History or English at Level 5 or above.

Specialist facilities

There are designated History classrooms at SDCC. We recommend core texts for you and base our units around them to keep things simple for you.

The library has a huge array of history books for you to borrow.

Career Pathways
Employment as a graphic designer is the clearest route but this course also offers a way into illustration or, with further study, animation; you could work for the media, an advertising company or design agency.

Degree Courses
Games design Animation Digital arts Graphic communication Graphic design Graphic and communication design Media design Illustration Printmaking Packaging design Typographic design

Average Salaries
Graphic/web designer £30,000 Interior designer £35,214 Creative director £64,950 Marketing manager £35,250 Creative Director, Advertising £38,141 Animator £26,000 Make-up artist £20,845 Medical Illustrator - £30,615 Visual Merchandiser - £30,000 VFX artists- £38,000 Illustrator - £32,553

Career Pathways
History provides a great platform for a variety of careers. These include: academic researcher, archivist, archaeologist, heritage manager, lawyer, politician, solicitor, museum education officer, academic librarian, civil service, broadcast or newspaper journalist, editorial assistant, museum/gallery curator, teacher, marketing executive, record manager, genealogist, arts administrator, marketing executive, sales executive, police officer. History has a high status with many employers including the Law and Armed Forces and it will benefit you in any job or career where effective communication and the ability to make sense of complex issues and identify the most important points is important.

Degree Courses
History is a highly respected academic subject and is an ideal foundation for many Arts and Social Science degrees, including Law, Economics, Politics and Archaeology, as well as History and Classics. Recent History students went on to study at top universities such as Exeter, York, Cardiff and Warwick.

Average Salaries
Trainee lawyer £20,000 - £30,000 potentially rising to over £100,000 Qualified teacher salaries start at £28,000 - £43,000 Archeologists starting salaries £21,000 - £25,000 Broadcast journalist £33,000 University lecturer £40,000



Mathematics

What will I study?

The AS and A2 level Mathematics courses we offer build from GCSE (9 – 1) level Mathematics and introduce calculus and its applications. They emphasise how mathematical ideas are interconnected and how mathematics can be applied to model situations using algebra and other representations, to help make sense of data, to understand the physical world and to solve problems in a variety of contexts, including social sciences and business. This prepares students for further study and employment in a wide range of disciplines involving the use of mathematics.

The A level course is a linear qualification with content covering the following four broad areas of study:

1. Mathematical processes
2. Pure mathematics
3. Mechanics
4. Statistics

AS level Mathematics follows similar themes, introducing many of the concepts and topics outlined above.

How will I be assessed?

A Level: This is a linear course, with all assessment by examination at the end of the two years. This will consist of three separate written papers, each two hours long.

AS-level: Two examination papers, completed after one year of study, covering aspects of each of the four broad areas outlined above.

Exam board OCR

Entry requirements

6 GCSE grades, Level 9-4.

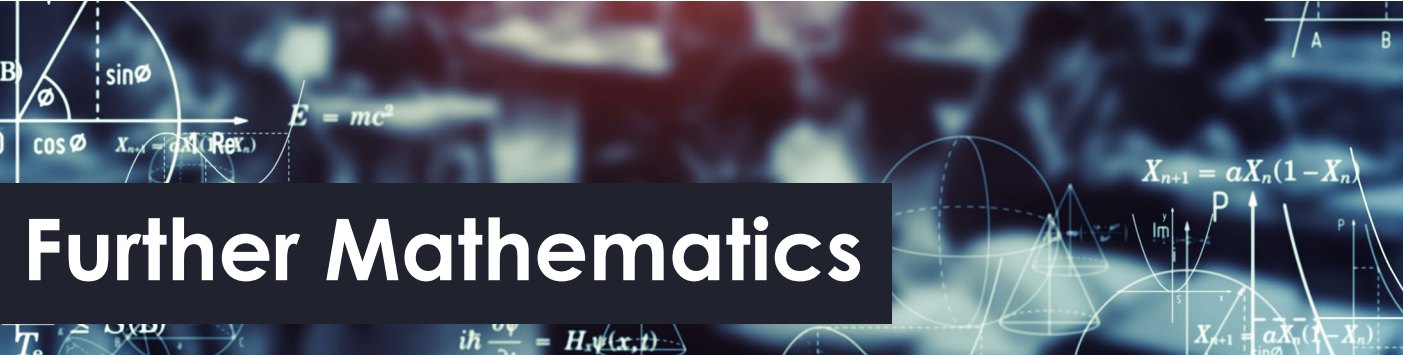
Subject entry requirements

Students would be expected to have studied Mathematics at the Higher Tier and achieved at least a Level 6 (preferably a Level 7 or above).

Specialist facilities

Students are encouraged to access resources via use of ICT, including portable devices in the classroom. There is an expectation that ICT will be used in teaching and learning mathematics, allowing students to study graphical and statistical topics using Autograph, Geogebra and Excel. All students will be issued an electronic textbook as well as access to the MEI support website 'Integral'.

Students will need an A Level standard calculator.



Further Mathematics

What will I study?

The subject is taken alongside AS/A2 level Mathematics. Further Mathematics is both deeper and broader than A level Mathematics. AS and A level Further Mathematics build from GCSE, AS and A level Mathematics. As well as building on algebra and calculus introduced in A level Mathematics, the A level Further Mathematics core content introduces complex numbers and matrices, fundamental mathematical ideas with wide applications in mathematics, engineering, physical sciences and computing. The non-core content includes different options that can enable students to specialise in areas of mathematics that are particularly relevant to their interest and future aspirations.

The course content is listed below, under four headings:

1. Mathematical processes
2. Core pure mathematics
3. Major optional content: Mechanics, or Statistics
4. Minor optional content from: Mechanics, Statistics, Modelling with algorithms, Numerical methods, Extra pure or Further pure with technology

* A level only

** AS levels students will cover two of these options

How will I be assessed?

A Level: This is a linear course with all assessment by examination at the end of the two years. This will consist of three separate written papers, covering each of the headings 2, 3 and 4 (left).

AS-level: Three examination papers, completed after one year of study, covering the core pure and two options as outlined (left).

Exam board OCR

Entry requirements

6 GCSE grades, Level 9-4.

Subject entry requirements

A full Further Mathematics AS/A2 level is only suitable for those students achieving at least a Level 7 in Mathematics at GCSE (preferably Level 8/9).

Specialist facilities

Students are encouraged to access resources via use of ICT, including portable devices in the classroom. There is an expectation that ICT will be used in teaching and learning mathematics, allowing students to study graphical and statistical topics using Autograph, Geogebra and Excel. All students will be issued an electronic textbook as well as access to the MEI support website 'Integral'.

Students will need an A Level standard calculator and may benefit from using a graphical calculator.

Career Pathways

Mathematics AS and A level are not just a stepping stone to a degree in Mathematics, it is also a requirement for many other courses and careers. These range from engineering to accountancy, medicine to computer science and statistics to business management.

For more information see: www.mathscareers.org.uk

Degree Courses

Mathematics is a subject that supports study in many diverse areas, including the sciences, economics, business, the humanities and sports studies.

Average Salaries

'Both graduates and non-graduates who took A Level Maths ended up earning on average 10% more than those of similar ability and background who did not.'

The Guardian

Career Pathways

Mathematics AS and A level are not just a stepping stone to a degree in Mathematics, it is also a requirement for many other courses and careers. These range from engineering to accountancy, medicine to computer science and statistics to business management.

For more information see: www.mathscareers.org.uk

Degree Courses

Further Mathematics should be considered by anyone hoping to do a Mathematics degree, but it is also an excellent A Level for those considering studying such subjects as Engineering, Science, Computing or Finance/Economics.

Taking Further Mathematics to AS or full level will support your study of A Level Mathematics greatly and can help your transition to degree level courses.

For more information see www.furthermaths.org.uk

Average Salaries

'Both graduates and non-graduates who took A Level Maths ended up earning on average 10% more than those of similar ability and background who did not.'

The Guardian



Media Studies

What will I study?

The course is a combination of theory, analysis and practical application, therefore requiring good written and communication skills. At A Level you will undertake critical analysis of a range of different media forms including television, advertising, print media and online media; applying a variety of theoretical approaches, along with knowledge and understanding of media language investigating how texts position audiences to respond in particular ways. You will develop excellent critical thinking skills and a detailed understanding of how the media works; focusing on media language, representation, audience and industry. The course is best suited to students with ability to think critically, work independently and enjoy written analysis of media texts. You need to be a creative individual with a strong work ethic. If you are curious about the world around you and keen to become part of the organisations which shape our views of the world, then this is right for you.

How will I be assessed?

- Paper 1:** Media Language and Media Representations (35% of overall grade).
- Paper 2:** Media Forms (35% of overall grade).
- Coursework:** Create a cross-media production. You will choose from one of six briefs to create a media product (30%).

Exam board AQA

Entry requirements

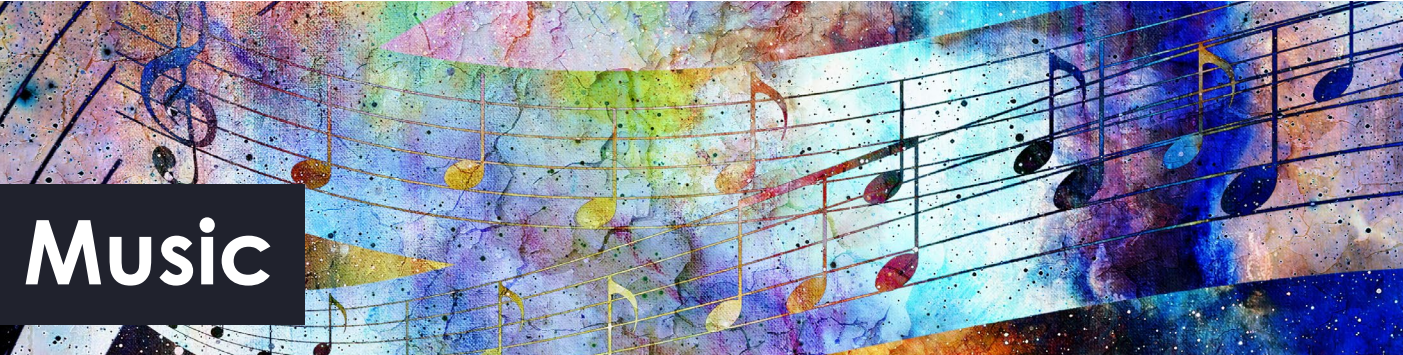
6 GCSE grades, Level 9-4.

Subject entry requirements

Level 6 or above in English Language.

Specialist facilities

Access to specialist teaching and modern technology, supporting critical analysis of a range of media forms. Opportunities to link with local universities, guest speakers and SDCC Sixth Form alumni to further enrich course experience.



Music

What will I study?

Music is constantly evolving; inspiring creativity and expression in a way that no other subject can. This A level brings listening, performance and composition to life in new and engaging ways, and links to the world around us like never before.

Component 1: Performing. This involves solo and/or ensemble work and will consist of a performance that will last between 6 and 12 minutes.

Appraising Music. This involves listening, analysis and contextual understanding.

Component 2: Composing. This involves the creation of two compositions. The first must be related to a brief and the second is a free composition, and will last a total of 4-10 minutes.

Component 3: Appraising. This involves listening, analysis and contextual understanding with an exam paper with listening and questions using excerpts of music. This leads to a written examination on three areas of study and set works.

How will I be assessed?

- Component 1** (Performing) and **Component 2** (Composing) add up to a total of 60% of your final A Level grade, but you can choose whether you would like to do more composing.
- Performing is externally assessed by a visiting examiner.
- Composing is externally marked by an examiner.
- Appraising is a written exam paper and contributes 40% of A Level marks.

Exam board Eduqas

Entry requirements

6 GCSE grades, Level 9-4.

Subject entry requirements

Level 5 or above in English and Level 6 or above in GCSE Music or equivalent (Grade 5 instrumental skills). An ability to read stave notation. Grade 5 theory is highly beneficial.

Students will be expected to practise daily, attend College ensembles and concerts.

Specialist facilities

A purpose-built music block which includes two specialist teaching rooms, recording studio, practice suite, computer studio software, grand piano, music class equipment and more.

Career Pathways
Broadcast News Analyst Communications Professor Copy Writer Correspondent Editorial Writer, Newspapers & Magazines Public Relations Specialist Publications Editor Screen Writer Script Editor

Degree Courses
BA Media and Communication BA Film and Media Studies BA Modern Language and Media Studies BA Business Studies BA Journalism

Average Salaries
Marketing Professionals: £33,800 Public Relations: £40,000 Copywriter: £25,000 Communications Officer: £33,998

Career Pathways
Graduate jobs may include composer, editorial assistant, magazine journalist, musician, music librarian, music therapist, private music teacher, community arts worker, film production manager, museum/art gallery curator, or musical/festival organiser.

Degree Courses
A level Music is required for entry into Music School or on to Music degree courses. There are also a wide variety of vocational music courses which can be studied post-18. Music especially complements dance choreography and is viewed positively by HE/FE dance tutors.
Degree courses may include: BMus Bachelor of Music Honours BA Hons Education and Music BMus Hons Composition BA Hons Jazz BMus Hons Performance

Average Salaries
Teaching professional £30,000 Musician £42,000 Secondary Education Teaching professionals £44,720



Philosophy and Ethics

What will I study?

The areas of study in this course are fascinating; Philosophy being the original art of thinking from which all other academic subjects have arisen; and Ethics (being a branch of Philosophy itself) which is the study of how human beings ought to behave.

Component 1: Philosophy of religion

Students study philosophical language and thought, and issues and questions raised by belief:

- Ancient philosophical influences
- The nature of the soul, mind and body
- Arguments about the existence or non-existence of God
- The nature and impact of religious experience
- The challenge for religious belief of the problem of evil
- Ideas about the nature of God
- Issues in religious language

Component 2: Moral philosophy

Students explore key concepts and the works of influential thinkers, ethical theories and their application:

- Normative ethical theories
- The application of ethical theory to two contemporary issues of importance
- Ethical language and thought
- Debates surrounding the significant idea of conscience
- Sexual ethics and the influence on ethical thought of developments in religious beliefs

Component 3: Developments in religious thought

Students explore:

- Religious beliefs, values and teachings, their interconnections and how they vary historically and in the contemporary world
- Sources of religious wisdom
- Practices which shape and express religious identity, and how these vary within a tradition
- Significant social and historical developments such as feminism and Marxism in theology and religious thought
- Key themes related to the relationship between religion and society

How will I be assessed?

There are 3 units: Philosophy, Ethics and Christianity. Each unit is worth 33% of the final grade. This course is 100% exam and there is no coursework.

Career Pathways
Politician/Diplomat Doctor/Nurse United Nations Human Rights Community development worker International aid/development/charity worker Mediator/Advice/Youth Worker Journalist Teacher Archivist Police Officer Counsellor

Degree Courses
Medicine Nursing Law Criminology Psychology Teaching/Educational Studies English Journalism Classics Politics Philosophy Economics

Exam board OCR

Entry requirements
6 GCSE grades, Level 9-4.

Subject entry requirements
GCSE Religious Studies provides a good basis for coping with this course, although is not essential. Essay writing is a necessary key skill, so a Level 5 or higher in GCSE English Language/English Literature or similar academic subject is desirable. Enjoying reading and being able to handle controversial subject matter would be an advantage.

Specialist facilities
A number of texts are provided. Opportunities arise for visiting other establishments for conferences and lectures and for meeting other students.
Students are encouraged to purchase their own course textbook, BUT we have plenty of excellent resources we have produced as a team.

Average Salaries
Lawyer £62,000 College Professor £43,722 Psychologist £75,230 Mediator £52,077 Salaries can range from £43,000 as a teacher to £60,000 or higher as a lawyer or politician.



Physical Education

What will I study?

This course gives you an opportunity to immerse yourself in the world of sports and physical education, with the chance to perform or coach a sport (through the non-exam assessment component), and delve into the 'how?' and 'why?' of physical activity and sport. You will receive a well-rounded and full introduction to the world of physical education, sport and sports science. The combination of physical performance and academic challenge provides an exciting opportunity for students. Through the academic study you will gain the knowledge and understanding required to improve your own performance and the performance of others. This grounding in every facet of Physical Education provides a fantastic base from which to build when moving on to higher education, employment or further training.

How will I be assessed?

- Component 1:** Physiological Factors Affecting Performance
- Component 2:** Psychological Factors Affecting Performance
- Component 3:** Socio-cultural and Contemporary Issue
- Component 4:** Performance within Physical Education

You will be entered for the AS assessments, as it is proven that this is an excellent preparatory tool for the final assessments at the end of the second year. Therefore you can opt to complete just an AS Level in this subject, but due to the vast amount of theory content that must be covered in the first year, we would strongly advise against this and recommend commitment to the full 2 year course.

Students have core practicals that are integral to the course and students will be examined on their ability to plan, analyse and evaluate the effectiveness of a training plan as part of component 4 within the end of course assessments. Students have their practical skills assessed against the Assessment Criteria that will be externally moderated, usually in the form of video evidence.

Components 1-3 are examined combined with component 4 which is your practical performance in one sport, and your ability to analyse and evaluate a sporting performance.

Career Pathways
PE Teacher (Secondary) School Sports Coordinator University Lecturer Sports Coaching/Coach Educator Sports Journalist Sports Therapist Physiotherapist Personal Trainer

Degree Courses
BSc (Hons) Health and Exercise Science BSc (Hons) Sports Therapy BA (Hons) Coach and Physical Education BSc (Hons) Sport Management and Coaching BA (Hons) Sports Journalism Bed Physical Education - Secondary Education BSc (Hons) Physiotherapy BSc (Hons) Sport Rehabilitation and Conditioning

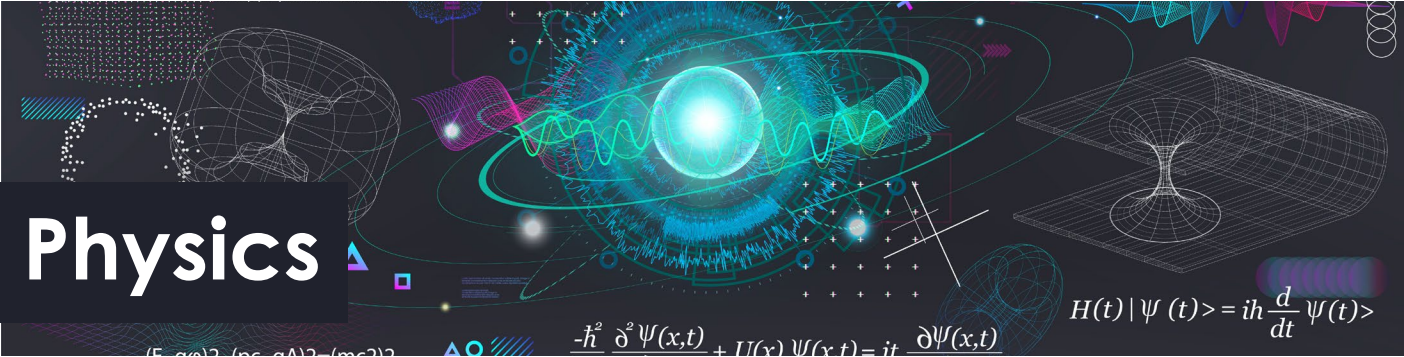
Exam board OCR

Entry requirements
6 GCSE grades, Level 9-4.

Subject entry requirements
English and Mathematics at Level 5 or above, and a Level 6 or above in GCSE Physical Education and GCSE Science.
Student personality and character are very important and therefore students may still be accepted if they just miss out on a specific grade.
Students will need to be able to work independently and collaboratively when required, showing mutual respect and a commitment to achieve the highest standards in all aspects of the course.

Specialist facilities
Students will have access to all College sports facilities.
Extra-curricular trips are organised to ensure access to specialist, up-to-date protocols and equipment.
The A Level PE teaching team are highly experienced in their areas of specialism and are consistently complemented on their excellent standards of delivery.

Average Salaries
PE Teacher (Secondary) £26,000 - £44,000 School Sports Coordinator £26,000 University Lecturer £38,000 - £50,000 Sports Coaching/Coach Educator £24,375 Sports Journalist £30,000 Sports Therapist £27,000 - £47,000 Physiotherapist up to £35,000 Personal Trainer £15,000 - £25,000



What will I study?

Physics is a subject that has great resonance in many aspects of everyday life. It is the subject that allows students to explore, explain and understand much of modern technology as well as taking a deeper look at the underlying fundamental aspects of Physics that will be familiar to students from GCSE.

The main topics of study are:

Practical Circuits
Waves and their interactions
Mechanics of motion
Quantum Mechanical Effects
Gravitational and Electrical Fields
Radioactivity
Medical Physics

How will I be assessed?

Students' knowledge, application and practical skills are continuously assessed throughout the year using in-lesson strategies, home-learning and end of topic tests. There are regular mock exams based upon exam-style questions to provide both students and staff with a measure of progress.

Mock exams are also used to provide feedback on students' exam technique and application of knowledge, both of which are essential for success in this purely exam based course.

For the A-level course, there are external examinations at the end of Year 13. Practical investigations are integral to the course and students will be assessed on their ability to plan, analyse and evaluate experimental designs within the end of course assessments. However, their practical skills will not contribute to their end result.

You will study the following topics:

- Forces and motion
- Electrons, waves and photons
- Newtonian world and astrophysics
- Particles and medical physics

Career Pathways
A Level Physics allows you access to many career opportunities. These include: physics, geophysics, environmental physics, engineering, education, medicine, computing, energy industries, civil service, materials science and the communications industries.

Degree Courses
Specific degree courses include: Physics: astrophysics/astronomy, medical physics, nuclear physics, geophysics Engineering: mechanical, electrical, civil, aerospace, marine Sound engineering Automotive engineering

Exam board OCR
Entry requirements
6 GCSE grades, Level 9-4.
Subject entry requirements
At least: <ul style="list-style-type: none">• In triple science – Level 6 in GCSE Physics, as well as a Level 6 in at least one other science (GCSE Biology or Chemistry).• In GCSE Combined Science – 66• Level 6 in GCSE Mathematics and Level 5 in English
Specialist facilities
There are two dedicated Physics laboratories, equipped to a very high standard with a range of modern equipment. Examples include: dual beam oscilloscopes, 'spot' galvanometers, electron deflection tubes, linear air-track, platinum resistance thermometer, Wheatstone Bridge, potentiometer and micrometers.



What will I study?

The course includes both UK and US Politics. The units covered have a broad range which include lively, relevant and controversial topics covering news and current affairs from the UK and the US. The course will help you understand how the UK is run and develops research, written communication and debate skills. It also helps grow your confidence. You will develop skills in all components of this subject including: the ability to comprehend and interpret political information, critically analyse and evaluate the areas of politics studied, construct arguments and explanations leading to reasoned conclusions. You will also learn how to identify parallels, connections, similarities and differences between aspects of the areas studied as well as developing the ability to construct and communicate arguments and explanations with relevance, clarity and coherence.

Politics is an A level that you absolutely should want to study, if chosen. It will involve being ready and able to discuss all of the relevant and up to date politics of the day.

How will I be assessed?

Paper 1: Government & Politics of the UK. Written exam – 2 hours. This will be 33% of the overall A level and will include a mixture of medium length 'explain' and essay style questions.

Paper 2: Government & Politics of the USA and Comparative Politics. Written exam – 2 hours. This will be 33% of the overall A level and will include a mixture of medium length 'explain' and essay style questions.

Paper 3: Political Ideas. Written exam – 2 hours. This will be 33% of the overall A level and will include a mixture of medium length 'explain' and essay style questions.

Exam board: [AQA.org.uk/subjects/politics/a-level/politics-7152](https://www.aqa.org.uk/subjects/politics/a-level/politics-7152)

Exam board AQA
Entry requirements
6 GCSE grades, Level 9-4.
Subject entry requirements
GCSE History or English at Level 5 or above.
Specialist facilities
An opportunity to visit the Houses of Parliament at some point during the course. An opportunity to meet, discuss and debate with a local M.P.

Career Pathways
Diplomat Police Market Researcher Local Government Media/P.R. Stockbroker Civil Service Research Officer Policy Officer Political risk analyst Public affairs

Degree Courses
Economics English History International Relations Journalism Law Philosophy Sociology

Average Salaries
Lawyer £60,000 - £75,000 Journalist £30,000 Stockbroker £100,000 - £150,000 Civil Service £50,000 Police £30,000



Psychology

What will I study?

Studying Psychology at this level is challenging and demanding. It encourages you to think for yourself about complex issues and to critically assess evidence from a range of sources. Studying Psychology helps you develop a deeper awareness of yourself and others and gives you a major insight into human behaviour.

Compulsory content of the course includes:

- Social Influence that considers why we conform and why we obey.
- Memory that considers how brain injury can affect what we remember.
- Attachment that considers how significant parent-child relationships are.
- Psychopathology that considers what causes a phobia and how it is treated?
- Approaches in Psychology that consider to what extent does nature cause behaviour.
- Biopsychology that considers Alien Hand Syndrome and why it occurs.
- Research Methods that consider how psychologists conduct research.
- Issues and debates in psychology that consider if humans truly choose their behaviour.

Optional elements of the course we study include:

- Relationships that consider peacocking. Does it work?
- Schizophrenia that considers what causes this complex illness and how it can be treated.
- Forensic psychology that considers whether we are born good or evil.
- Addiction that considers if it is a disease and what causes it.

Other optional elements of the course include:

- Gender
- Cognition and development
- Eating behaviour
- Stress
- Aggression

How will I be assessed?

There are three exam papers that will be taken at the end of Year 13 for the full A Level. Each exam is weighted to contribute 33.3% to the overall A Level grade. There are two exam papers for the AS accreditation, each paper is worth 50% of the overall AS Level. Should you opt for this, these exams would be taken in May of Year 12.

Career Pathways

Graduate jobs may include:
Clinical Psychologist
Counsellor
Educational Psychologist
Forensic Psychologist
Health Psychologist
HE Lecturer,
Occupational Psychologist
Market Research Executive
Personnel Officer
Teacher
Social Worker/Social Researcher
Speech and Language Therapist
Psychotherapist.

Degree Courses

Psychology can be studied as a stand alone subject or combined with other subjects such as criminology and sociology.

Average Salaries

Salaries can range from £24,000 as a starter to £60,000 as an experienced practitioner.



Sociology

What will I study?

The topics studied in Sociology include:

- Work, poverty, welfare, and research methods.
- Education with research methods in context.
- Beliefs in society.
- Crime and deviance with theory and methods.

AS Sociology is taught over one academic year (as a separate course and as part of the full A level) and assessed at the end of the year (typically, Year 12).

The content of the AS course mirrors that required for year 1 of a full A level in Sociology. However, A level students will be examined on this content at the end of the year 2 (typically, the end of Year 13). The A level terminal assessments will require that students demonstrate a deeper understanding of the content of the modules in which they are assessed.

How will I be assessed?

At AS level there will be two examinations each of which accounts for 50% of the total marks.

At full A level, there will be three examinations, each of the three papers account for 33.3% of the total marks.

Exam board AQA

Entry requirements

6 GCSE grades, Level 9-4.

Subject entry requirements

GCSE Level 5 or above in English, or other subjects such as Geography, History, Religious Studies or Psychology.

Specialist facilities

The Sociology Department has dedicated rooms on the upper floor of the Atrium building. There is also a comprehensive Sociology book collection in both the Atrium classrooms and in the Library. Additional books, films and articles are available.

Career Pathways

Non graduate jobs may include some administrative roles in social services, prison service or in a non-governmental organisation.
Graduate jobs may include:
Education
Probation Officer
Social/Community work
Social Research
Social Worker
Counsellor
Housing Manager
Prison Governor
Welfare Rights Adviser.

This is merely a sample of career pathways in which Sociology can play a valuable part.

Degree Courses

Sociology can be studied as a stand alone subject or it can be combined with subjects such as media, psychology and criminology.

Average Salaries

Salaries can range from around £24,000 as a starter to up to £60,000 as an experienced practitioner.



What will I study?

The course will convert your GCSE pass to a high level of spoken and written fluency and grammatical accuracy. You will study technological and social change, looking at the multicultural nature of Hispanic society. You will study highlights of Hispanic artistic culture, including a focus on Spanish regional identity and the cultural heritage of past civilisations. There is also an opportunity to learn about aspects of the diverse political landscape of the Hispanic world. We will analyse a novel and a film, enabling you to improve your Spanish while studying culture at the same time.

How will I be assessed?

Paper 1 (40%) tests listening, reading and writing. This paper assesses aspects of Hispanic society, artistic culture in the Hispanic world, multiculturalism in Hispanic society, aspects of political life in Hispanic society and grammar.

Paper 2 (30%) is a writing exam that requires full answers in Spanish in response to a set text and a film.

Paper 3 (30%) is a speaking test. The exam is based on an individual research project including a discussion of one of four sub-themes i.e. aspects of Hispanic society or artistic culture in the Hispanic world or multiculturalism in Hispanic society or aspects of political life in Hispanic society.

Exam board Edexcel

Entry requirements

6 GCSE grades, Level 9-4.

Subject entry requirements

English GCSE at Level 5 and Level 6 in Spanish.

Specialist facilities

Fully equipped Modern Language classrooms.



Career Pathways

Language skills can be used in almost any career and keep your options open. Some possible careers are:

- Teacher
- Translator
- Diplomatic Service
- Marketing executive
- International aid/development worker
- Sales executive
- Business and finance manager
- Science and engineering
- Travel and Tourism
- Law

Degree Courses

A large number of university courses can be supplemented by a Modern Language, thus opening up career opportunities.

Degree course may include:

- International Business Management and Spanish
- Linguistics with Spanish
- Spanish and a second language
- Film and Spanish
- History and Spanish
- Art History and Spanish
- English Law and Spanish
- Economics with Spanish

Average Salaries

On average, people who use languages in their jobs earn 10% more. Generally, people who speak another language get better jobs & salaries than those who only speak their own language.

Vocational Courses



What will I study?

Why do people commit crime? Are some people more likely to commit crime than others, and if so, is it because they were 'born like that' or because of their upbringing or because of the social circumstances in which they live? What does the evidence suggest? Does punishing guilty people with prison work? From the crime scene to the Law Courts, what happens when a crime has been committed? What counts as evidence?

These are some of the questions at the heart of this popular Level 3 Applied Diploma in Criminology. You will have the opportunity to mix academic study with practical investigations, individual work with group projects. The course is clearly organized with thought-provoking resources and case studies.

You will need to work hard and be committed to ensure regularly set work is completed on time to a high standard. You will need to be well organised, often reading about issues before you come to the lesson. Given the nature of crime some content will be disturbing, although all topics are handled sensitively.

You will be working in a supportive and thought provoking environment where informed views will always be valued.

There are four areas of study:

Unit 1 (Year 12): Changing awareness of crime where you study the differences between the myth and reality of crime and you plan a campaign for change in relation to crime.

Unit 2 (Year 12): Criminological theories where you develop a detailed understanding of ideas behind why people commit crime.

Unit 3 (Year 13): Crime Scene to Court Room where you analyse evidence and review cases to determine whether verdicts are safe and just.

Unit 4 (Year 13): Crime and Punishment where you study how societies respond to criminal behavior and whether these responses are just and effective.

How will I be assessed?

You will be assessed through controlled assignments and external exams at the end of year 12 (Units 1 and 2) and year 13 (Units 3 and 4).

The Diploma carries the same UCAS points as an A Level.

Career Pathways

The qualification will allow you to consider employment within some aspects of the criminal justice system like the National Probation Service, the Police, the Courts and Tribunal Service or the National Offender Management Service.

Degree Courses

The course will provide access to a range of higher education degree courses including Law, Psychology, Sociology and further study in Criminology.

Average Salaries

These vary depending on the career you pursue.

A police apprenticeship degree starting salary is £19,164 which will rise to £25,902 within three years.

A trainee lawyer will have a salary in the region of £22,794 which can rise to £200,00 for Barristers.

The average salary within the prison service is £34,320.

Exam board WJEC

Entry requirements

6 GCSE grades, Level 9-4.

Subject entry requirements

GCSE Level 5 or above in English and GCSE Level 5 or above in Geography, History or Religious Studies.

The course links well with many other A Levels, but especially Philosophy and Ethics, Politics, Psychology and Sociology.

Specialist facilities

Dedicated social science classroom in the Sixth Form Centre. Access to specialist Criminology periodicals, textbooks, course texts and online resources.



What will I study?

In Year 1 there are three units:

Unit 1: Building positive relationships in health and social care (portfolio). To introduce the many relationships encountered in the health and social care sector, and an understanding of how these relationships are essential to the delivery of safe and effective care and support within the sector.

Unit 2: Equality, diversity and rights in health and social care (exam). This unit will help you to understand the implications of diversity on practice and also the effects of discriminatory practice on individuals who require care or support. You will also gain an appreciation of how legislation can support anti-discriminatory practice.

Unit 3: Health, safety and security in health and social care (exam). This unit introduces you to health, safety and security in health and social care. It will include legislation, policies and procedures and how they work to reduce risks within the health and social care sector.

In Year 2 there are three further units, one compulsory and two option units:

Unit 4: Anatomy and physiology for health and social care (exam). This unit introduces the basic structure, organs and functions of the body systems involved in everyday activities and maintenance of health (compulsory).

Unit 10: Diet and nutrition for health and social care. This unit introduces the various components of 'good' nutrition. You will examine different food and nutrition groups, and their health benefits.

Unit 13: Sexual health, reproduction and early development stages. In this unit you will learn about sexual health and contraception available. The importance of prenatal health and factors that could have an impact on the stages of pregnancy and development of an infant in the first year.

How will I be assessed?

The course is assessed using a variety of methods which include:

- External examinations
- Written assignments
- Projects
- Case studies

Exam board OCR

Entry requirements

6 GCSE grades, Level 9-4.

Subject entry requirements

GCSEs to include Science, and English or other subjects requiring research, reading and writing.

The Cambridge Technical Extended Certificate is equivalent to one A Level and therefore has the same minimum entry requirements as for A Levels.

Specialist facilities

Students will have access to a variety of texts, journals, and information technology. There will also be visits to local care facilities and speakers from various professions.

Career Pathways	Degree Courses	Average Salaries
<p>Non graduate jobs may include care assistant, nursing and social care, and administrative positions with NHS or Social Services.</p> <p>Graduate jobs may include lifestyle consultant, health promotion specialist, health service manager, nutritional therapist, physiotherapist, social worker, civil service administrator, counsellor, FE lecturer, local government administrator, medical sales executive, sports administrator.</p> <p>It is also widely accepted and respected for numerous NHS graduate careers, such as Nursing and Midwifery.</p>	<p>BA (Hons) Health and Social Care</p> <p>BSc (Hons) Public Health and Wellbeing</p> <p>BSc (Hons) Healthcare and Health Science</p> <p>BSc (Hons) Nursing</p> <p>BSc (Hons) Health Sciences</p> <p>BA (Hons) Social Work</p> <p>BSc (Hons) Psychology with Counselling</p> <p>BA (Hons) Education Studies</p>	<p>Nursing professionals £40,560</p> <p>Nursing auxiliaries and assistants £25,480</p> <p>Medical and dental technicians £31,200</p> <p>Midwife £40,040</p> <p>Social worker £24,000 - £40,000</p> <p>Physiotherapist £25,654 - £45,838</p>



Music Performance, Music Technology

BTEC Level 3 National Extended Certificate

What will I study?

BTECs embody a fundamentally learner-centred approach to the curriculum, with a flexible, unit-based structure and knowledge applied in project-based assessments. They focus on the holistic development of the practical, interpersonal and thinking skills required to be able to succeed in employment and higher education.

The Extended Certificate is taught over two yers, it is equivalent to one A Level and is for learners who are interested in learning about music and/or the performing arts sector alongside other fields of study, with a view to progressing to a wide range of higher education courses not necessarily in this field. The qualification is designed to be taken as part of a programme of study that includes other appropriate BTEC Nationals or A Levels.

Music Performance Components

1. Practical Music Theory and Harmony
2. Professional Practice in the Music Industry
3. Ensemble Music Performance
4. Music Performance Session Styles

Music Technology Components

1. Music for Sound and Media
2. DAW Production
3. Mixing and Mastering Techniques
4. Creative Synthesis and Sampling
5. Remixing and Reworking
6. Studio Recording Techniques
7. Live Sound

How will I be assessed?

The course is extremely flexible, practical and evidence based with work and rehearsals being filmed and showcased. Each course does have a percentage of externally assessed, timed pieces of work as outlined below:

Music Performance external assessment - 58%

Digital Music Production external assessment - 33%

Exam board
Pearson BTEC

Entry requirements

6 GCSE grades, Level 9-4.

Subject entry requirements

To have studied Music (this may have been certificated or completed externally).

Specialist facilities

Music: A purpose-built music block which includes two specialist teaching rooms, recording studio, practice suite, computer studio software, grand piano, music class equipment and more.



Performing Arts (Dance and Drama)

BTEC Level 3 National Foundation Diploma

What will I study?

Through the BTEC Performing Arts qualification you will develop a catalogue of practical and technical skills through both written and practical learning experiences. Students will perform vocational tasks that encourage the development of skills across all three Performing Arts disciplines, whilst naturally mastering transferable skills such as communication, teamwork, research and analysis, which are valued in both higher education and the workplace. The course is made up of 6 units in total; 4 of which are mandatory, accompanied by 2 optional units which enable students to engage with a bespoke learning experience.

The 4 mandatory units cover the following content areas:

- Skills and techniques for live performance
- Group performance
- Performing arts in the community
- Investigating practitioners' work

The 2 optional units will be chosen on a student-by-student basis, providing an array of topics for students to choose from depending on their areas of strength and personal aims. Students will be able to select units that focus on a particular discipline or go for a triple-threat approach. Regardless of which external units are studied, students will engage with:

- Set tasks – learners take the assessment during a defined window and demonstrate understanding through completion of a vocational task
- Performance – learners prepare for assessment over an extended window and demonstrate skills that generate some non-written evidence.

How will I be assessed?

The course is flexible, practical and evidence based with workshops, work and rehearsals being filmed and showcased. There is an expectation that written logs support practical evidence for all units. Each external assessment is taken under specified conditions, then marked by Pearson and a grade awarded. Learners are permitted to resit external assessments during their programme.

Exam board
Pearson BTEC

Entry requirements

6 GCSE grades, Level 9-4.

Subject entry requirements

To have studied Dance, Drama and/or Music at Key Stage 4 (GCSE or Vocational).

Specialist facilities

Dance: Specialist dance studio with sprung wooden dance floor and dance theory room.

Drama: We are very fortunate to have three specialist drama studios. These provide a superb working environment.

Career Pathways
Graduate jobs may include composer, performer, choreographer, sound technician, events manager, production manager, director, festival organiser and fund raiser.

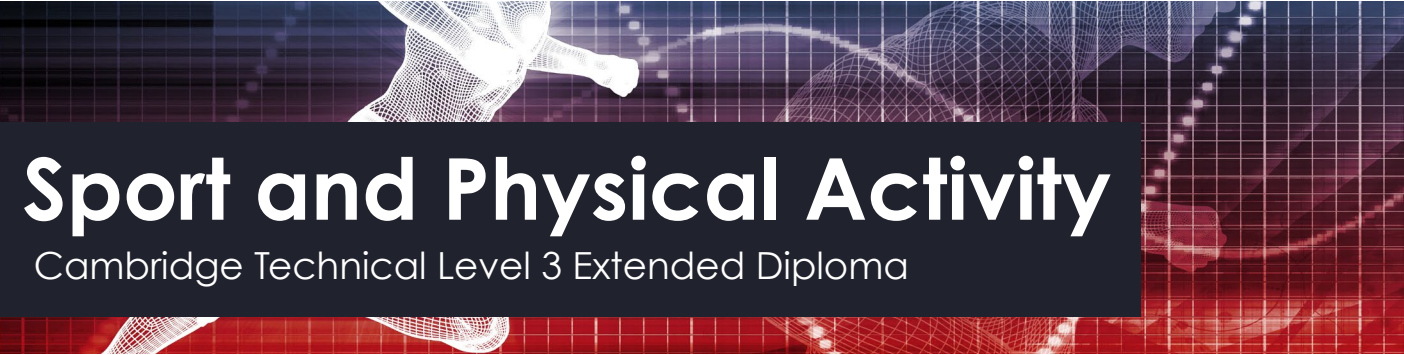
Degree Courses
The Extended Certificate is recognised and accepted for University applications. Courses may include: BA in Music Performance BMus in Music Technology and Composition BSc Music Composition and Technology for Film and Games BA Hons Musical Theatre BA Hons Contemporary Dance BA Hons Acting

Average Salaries
Actors, entertainers and presenters £58,240 Photographers, audio-visual and braodcasting equipment operators £31,200 Arts officers, producers and directors £50,440 Marketing associate £33,800 Events managers and organisers £39,860

Career Pathways
Non graduate jobs may include: Teaching Support - Dance School Administrative roles - Arts Leading and managing teams of people Graduate jobs may include: Actor Theatre Stage Manager Performer/Choreographer Arts development officer Drama Therapist Editorial assistant

Degree Courses
BA (Hons) Drama with Dance BA (Hons) Dance and Choreography BSc (Hons) Dance Science BA (Hons) Acting BA Stage Management and Technical Theatre BA Musical Theatre Performance BA (Hons) Contemporary Dance

Average Salaries
Dancer/Choreographer £39,520 Secondary Education teaching professionals £44,720 Actor/Entertainer/Presenter £58,240 Design occupations £32,240



Sport and Physical Activity

Cambridge Technical Level 3 Extended Diploma

What will I study?

If you opt to study the Extended Diploma (equivalent to 3 A Levels) you will take 17 units across the two years, made up of mandatory and optional units. Below are a selection of the units you will study:

- Body systems and the effects of physical activity
- Sports coaching and activity leadership
- Performance analysis in sport and exercise
- Sports and exercise psychology and sociology
- Organisation of sports events
- Group exercise to music
- Nutrition and diet for sport and exercise
- Sports injuries and rehabilitation

The units you will cover will give you skills, knowledge and understanding related to key aspects which underpin how sport and physical activity is delivered and organised. You will also develop transferable skills that employers are looking for such as planning, communication, adaptability and leadership.

How will I be assessed?

- Written assignments
- 4 externally set exams across the two years
- Practical assessments (Generally the practical assessments will be carried out in the form of a witness statement alongside video footage.)
- Presentations
- Video footage
- Observation reports
- Log book evidence

Exam board OCR

Entry requirements

6 GCSE grades, Level 9-4.

Subject entry requirements

Grades to preferably include English, Maths and Science. Possible entry through either a BTEC First Diploma in a related subject qualification, Level 2 Merit in CNAT Sports Studies/Sports Science or Level 6 in GCSE Physical Education.

Students will need to be able to work independently and collaboratively when required, showing mutual respect and a commitment to achieve the highest standards in all aspects of the course.

Specialist facilities

Students will have access to the computer suite in PE1 and all college sports facilities/equipment, together with specialist online presentations to support their learning.

Sport and Physical Activity

Cambridge Technical Level 3 Extended Certificate

What will I study?

The Extended Certificate is equivalent to one A Level and therefore enables you to study additional A Level subjects alongside this vocational option. You will study five units across the two years comprising of mandatory and optional units. Below is a list of the units you will study:

Mandatory units:

- Body systems and the effects of physical activity
- Sports coaching and activity leadership
- Sports organisation and development

Optional units (two units from the following):

- Sport and exercise psychology
- Practical skills in sport and physical activities
- Nutrition and diet for sport and exercise
- Physical activity for specific groups
- Sports injuries and rehabilitation

How will I be assessed?

- Written assignments
- 2 externally set exams across the two years
- Practical assessments (generally the practical assessments will be carried out in the form of a witness statement alongside video footage.)
- Presentations
- Video footage
- Witness statements
- Log book evidence

Exam board OCR

Entry requirements

6 GCSE grades, Level 9-4.

Subject entry requirements

Grades to preferably include English, Maths and Science. Possible entry through either a BTEC First Diploma in a related subject qualification, Level 2 Merit in CNAT Sports Studies/Sports Science or Level 6 in GCSE Physical Education.

Students will need to be able to work independently and collaboratively when required, showing mutual respect and a commitment to achieve the highest standards in all aspects of the course.

Specialist facilities

Students will have access to the computer suite in PE1 and all college sports facilities/equipment, together with specialist online presentations to support their learning.

Career Pathways
PE Teacher (Secondary) School Sports Coordinator University Lecturer Sports Coaching/Coach Educator Sports Journalist Sports Therapist Physiotherapist Personal Trainer

Degree Courses
BSc (Hons) Health and Exercise Science BSc (Hons) Sports Therapy BA (Hons) Coach and Physical Education BSc (Hons) Sport Management and Coaching BA (Hons) Sports Journalism Bed Physical Education - Secondary Education BSc (Hons) Physiotherapy BSc (Hons) Sport Rehabilitation and Conditioning

Average Salaries
PE Teacher (Secondary) £26,000 - £44,000 School Sports Coordinator £26,000 University Lecturer £38,000 - £50,000 Sports Coaching/Coach Educator £24,375 Sports Journalist £30,000 Sports Therapist £27,000 - £47,000 Physiotherapist up to £35,000 Personal Trainer £15,000 - £25,000

Career Pathways
PE Teacher (Secondary) School Sports Coordinator University Lecturer Sports Coaching/Coach Educator Sports Journalist Sports Therapist Physiotherapist Personal Trainer

Degree Courses
BSc (Hons) Health and Exercise Science BSc (Hons) Sports Therapy BA (Hons) Coach and Physical Education BSc (Hons) Sport Management and Coaching BA (Hons) Sports Journalism Bed Physical Education - Secondary Education BSc (Hons) Physiotherapy BSc (Hons) Sport Rehabilitation and Conditioning

Average Salaries
PE Teacher (Secondary) £26,000 - £44,000 School Sports Coordinator £26,000 University Lecturer £38,000 - £50,000 Sports Coaching/Coach Educator £24,375 Sports Journalist £30,000 Sports Therapist £27,000 - £47,000 Physiotherapist up to £35,000 Personal Trainer £15,000 - £25,000



“futures
are made
in the present”

SIXTH FORM

South Dartmoor Community College

Balland Lane • Ashburton • Devon • TQ13 7EW
Telephone 01364 652230

sixthform@southdartmoor.devon.sch.uk