

Futures are made in the present

South Dartmoor Sixth Form
Prospectus 21



Contents

Welcome

Our Sixth Form: at a glance
What our students say...
South Dartmoor student success stories
What Courses can I study?
Guidance for making course choices
Post-16 learner support bursary &
The employability award
Sixth Form enrichment and
Extra-Curricular opportunities
2021 Courses and entry requirements

Level 3 AS/A Level Courses

Art (Fine Art)
Art (Photography)
Biology
Business Studies
Chemistry
Computer Science
Classical Civilisation
Dance
Economics
French
English Language
English Literature
Extended Project Qualification
Geography
Graphic Design
History
Mathematics
Further Mathematics
Music
Philosophy and Ethics
Physics
Politics
Psychology
Spanish
Sociology

Applied Learning Pathway

OCR Level 3 Certificate in Sport

Level 3 Applied courses

(These can be studied in a combined
programme with A Level subjects)

Design, Construction and Engineering Cert
Health and Social Care

Welcome

We are an inclusive and welcoming sixth form. We want our students to succeed academically and personally and this informs everything we do, from our curriculum offer through to our enrichment and career development activities.

This is an exciting time for our Sixth Form. We have relocated the Sixth Form, to a new Centre at the heart of the college campus. Our Sixth Form provision, has been enhanced by its new location and improved facilities. South Dartmoor and Atrium Sixth Form have operated in close partnership since the Atrium Studio opened and this exciting development has facilitated a more efficient and enhanced Post 16 education for all our students.

All Sixth Form facilities have been centralised, with easy access for students to the Library, careers and specialised departments such as the Sciences, Music and PE that require dedicated classrooms and resources. This has significantly increased the time students have to focus on their studies and interests, with all the college facilities and resources only moments away from the new Sixth Form Centre.

The Sixth Form Centre has the most modern classrooms in the college, with enhanced ICT and display resources. Bring Your Own Device Wifi is available in the Sixth Form Centre to allow students to bring their own Laptops or tablet devices. A dedicated student study room, with work areas and PCs, is located in the Centre, as well as additional study areas in the 'Gallery', Sixth Form Resource Centre and a common room.

At the heart of the Sixth Form is the Pastoral system; the pastoral care of our students is crucial at all times and our Sixth Form is a safe and nurturing environment. A parent of one of our recent Year 13s endorses our care by saying: "I have always maintained that your Sixth Form is amazing. The pastoral care is so good. The students all come across as individuals; the staff know them so well, and always give extra time and effort helping them achieve their very best. I really cannot fault it."

If you are interested in applying to our Sixth Form for entry in September 2021, please contact us. You can ring our 6th Form Administrator on 01364 654301, if you have any questions about the Sixth Form or if you would like help applying.



Emma Gallagher
South Dartmoor and Atrium Sixth Form

made ent

A collage of 12 photographs showing students in various school activities. The photos are arranged in a grid-like fashion, with some overlapping. The images depict students in sports uniforms, in a classroom setting, in a gym, in a field, in a workshop, and in a social setting. The overall theme is student life and extracurricular activities.

Our Sixth Form: at a glance



Top 1% Nationally

We are in the top 1% nationally overall for teaching and learning ALPs 2020



Top 5% Nationally

We are in the top 5% nationally overall for student progress



Russell Group Universities

Over the past 3 years a third of students have gained places at Russell Group Universities or equivalent



Outperform competitors

We are consistently well above Exeter College, NAC, Teign, Coombeshead and KEVICC



100% success rate

100% success rate for Applicants to Degree Apprenticeship

What our students say...

”

Sociology is interesting as it relates to society and the social world. The discussions and debates enable me to speak and share my views about sociological topics and my learning more generally.

Student, A-Level Sociology

”

Applied Business was very well organised and was taught very well at this college.

Student, A-Level Applied Business

I gained great friendship with the classmates and would just say to anybody considering it: brace yourself for the demand – but it is ace!

Student, A-Level Sport & Physical Education

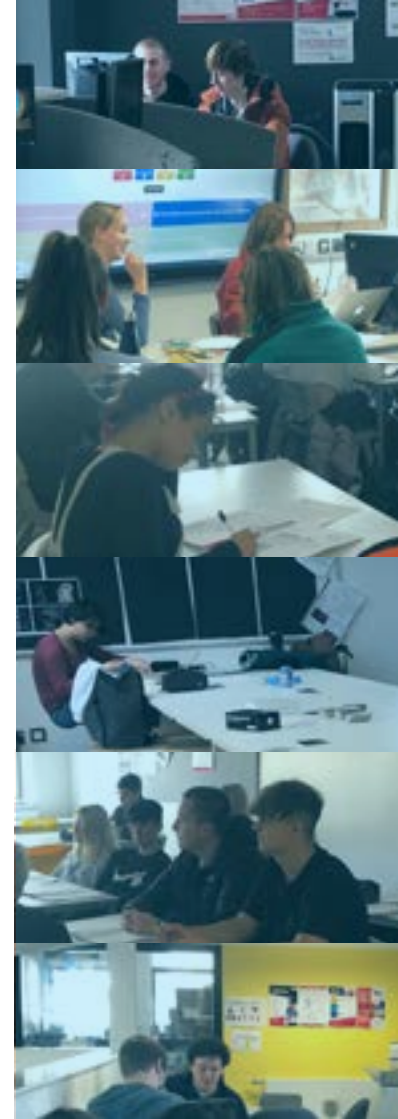
”

Happy Students, Happy Teachers, Happy Results Day

Chemistry is really interesting, I like that we learn the chemical ideas but also how it all fits into the real world.

Student, A-Level Chemistry

”



Be part of the our success story

We have a proven track record in our results and university entry for students. Here are just a few of the progression routes students have taken up in recent times.

Archeology
University of Leicester

Biochemistry
Oxford University

English Literature
Cambridge University

Biochemistry
Manchester University

Physics
Oxford University

Music
Leeds College of Music

PPE
Manchester University

Sports Coaching
Gloucester University

Film and Media Studies
London Southbank

Psychology
Birmingham University

Mathematics
Bristol University

Veterinary Science
Royal Veterinary College

Physics
Swansea University

Aerospace Engineering
Bristol University

Social Anthropology
& History: SOAS, London

Nursing
Cardiff University

Law
University of Exeter

Law
University of East London

Ecology
Cardiff University

Theology
University of Cambridge

Music
London College of Music

English Literature
Oxford University

Medicine
University of Nottingham

Medicine
University of East Anglia



What courses can I study?

We offer full time study arrangements. We invite students to opt for the courses they will enjoy and where they are likely to meet the entry requirements.

There are some compulsory elements of study at Post-16 including English and/or Mathematics GCSE retake if students have not achieved a grade 4 in these subjects, and an enrichment element. The purpose of the enrichment element is to ensure students are being adequately prepared for further study or employment through pursuing a broad and balanced Post-16 curriculum. Enrichment studies vary from accredited through to non-accredited courses, work experience or volunteering.

Applied learning programme

Within this pathway are practical courses closely related to the world of work. They are assessed through real activities and coursework, with few examinations.

Some of these courses such as Childcare will be full-time with a work placement element. However, our curriculum structure also allows students to select some applied learning courses that can run alongside academic qualifications. We have carefully selected our vocational courses to align with local employment sectors and the specialisms of the college.

The Level 3 courses usually last for two years and are equivalent to traditional A Level courses. You will need advanced courses to progress to university or into graduate type careers at a senior or officer level.

Advanced learning programme

Advanced Levels (known as A Levels) are level 3 courses. Following this study pathway would require students to study full-time for a period of at least two years.

All A Levels are now offered as 'linear courses'. This means that assessment of a student's knowledge and understanding of the whole course will take place at the end of two years.

After reviewing the impact of the recent government reforms to A Level and AS Level courses, we have decided that students will no longer be automatically entered for AS exams. Students may choose to study a subject to AS level only and sit the AS exams in the summer of Year 12. The AS qualification is equivalent to half an A-level and the grade students receive will count towards the UCAS points for their University application.

The new study programme will have the additional benefit of providing students with more teaching and learning time, without the stress and distraction of the summer AS exams, an exam that for those students intending to follow their course on to A level, will make no contribution to their final grade. We recommend that students choose up to four subjects to study in Year 12 to ensure academic breadth and more options for the future.

Students will be carefully monitored in Year 12 with regular progress reports to parents and two parents evenings. There will be two sets of 'mock exams' in November/December and June/July to ensure that students are working in line with their target grades. Due to the Covid-19 pandemic, we are constantly reviewing the format of onsite events such as parents evenings.

Year 13 options

Extended Project Qualification - EPQ

We also offer the Extended Project Qualification as a one year Level 3 course in Year 13. This carries more UCAS points than an AS, and we highly recommend that all Year 13 students consider this option as it is highly regarded by universities and employers because of the way in which it develops independent learning skills and allows for students to undertake in-depth research in a topic of their choice.

Diploma in Personal Finance

Highly recommended, this course provides an insight into the reality of money & Finance. Learn great life skills that can save you and your friends a fortune and also set you up in some incredibly well paid jobs. Students are encouraged to become responsible borrowers and sensible savers, and to appreciate the need for financial planning throughout their life.

Advanced Learning Pathway – Points to Consider

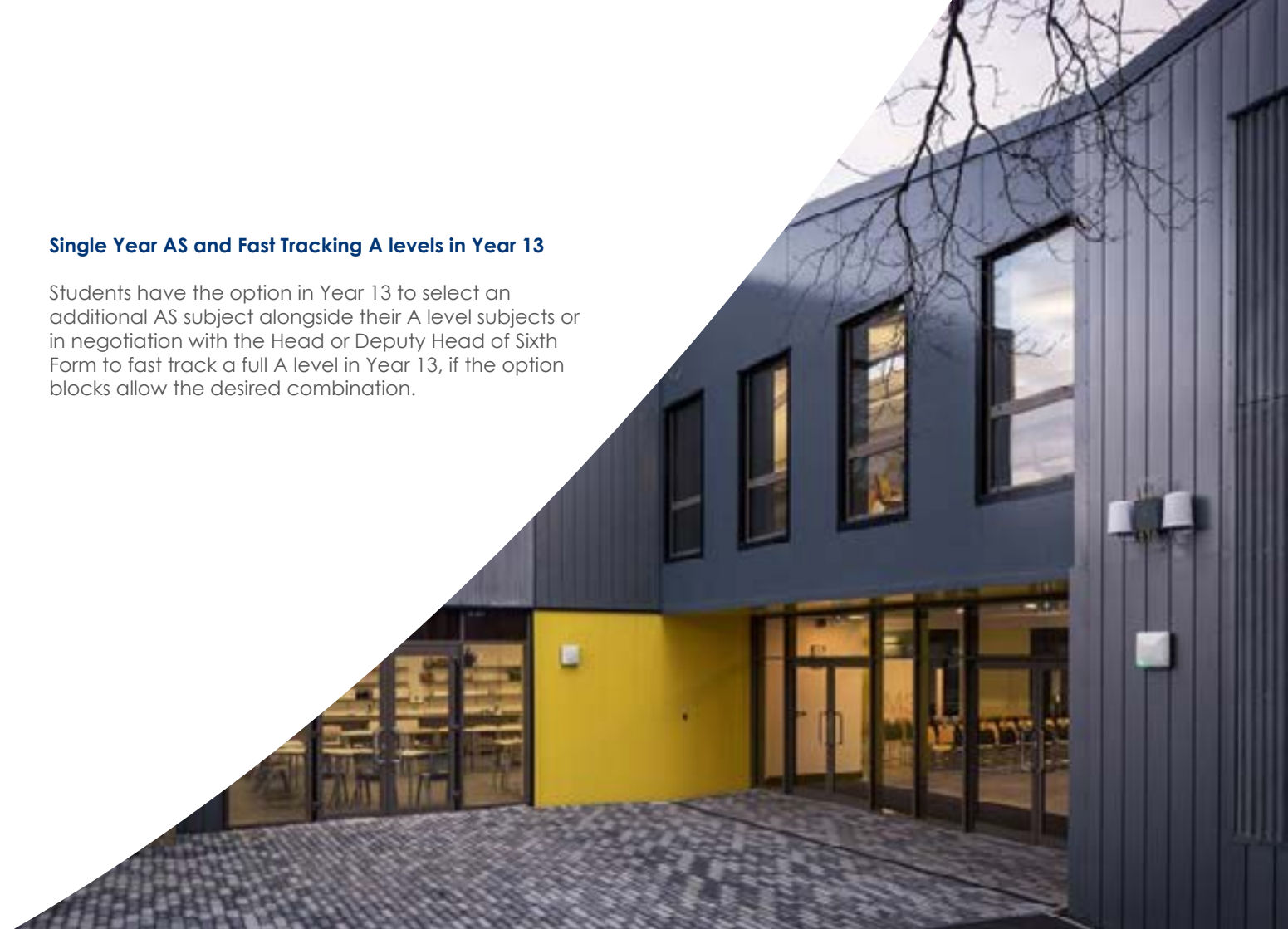
Students are encouraged to choose up to four level 3 courses in Year 12 and at least three of these should offer a progression to full A level study. In Year 13 some students will drop a subject at AS Level, continuing with three subjects to gain three full A levels.

You should choose subjects that you will enjoy and that you will be good at, that suit your future degree choice and that will help you in your intended career. Please see below 'What Should I Consider When Making My Choices?' for further advice.

Some universities do favour certain subjects over others, such as the Russell Group, and if you are planning toward a particular degree choice such as Medicine, Dentistry, Veterinary Science, Architecture etc. your A Level choices will be guided by university entrance requirements.

Single Year AS and Fast Tracking A levels in Year 13

Students have the option in Year 13 to select an additional AS subject alongside their A level subjects or in negotiation with the Head or Deputy Head of Sixth Form to fast track a full A level in Year 13, if the option blocks allow the desired combination.



Enhanced learning programme

'RISE' is a wrap-around package of activities that support and stretch high achieving students on an Advanced Level study programme to fulfil their potential and be in a position to compete for places at respected universities.

Students intending to apply for degree courses in Medicine, Veterinary Science or Law are strongly advised to sign up to 'RISE'. Students involved in 'RISE' receive individual help and advice in applying for complimentary study experiences such as Oxford University's 'UNIQ' summer school or the Nuffield Science Research Scholarships; tutoring to prepare them for University admissions tests such as UKCAT or ELAT; small group seminars and one-to-one tutorials to extend thinking and learning; early help and advice with UCAS applications; work experience opportunities related to areas of interest and a dedicated member of staff who, as the 'RISE' coordinator, will oversee their progress and support them in achieving their goals.

Work experience and careers

As part of the curriculum, students will be required to do a work experience/shadowing placement that relates to their study programme, career aspirations and/or develops their employability skills.

A week is set aside for this in January/February for all Year 12 students. During their time with the employer, students will complete a reflective journal to encourage them to evaluate the development of their knowledge and skills in their placement. Students will be fully supported by the Careers department to secure work experience that is effective, relevant and useful. Work experience needs to take place with an external employer, (external to the place where our learners study), where they can experience the real demands of the working environment, independent from their peers and their tutors. Every opportunity to explore online or distanced opportunities to provide students with work related experience will be explored. Work Experience Placements will be determined by the guidance related to the Covid-19 pandemic.



What should I consider when making my choices?

It is important to think about why you want to take the options you hope to study. It is advised that you discuss this with your tutor and parents/carer or family member who can help you make the right choice for your future.

Further details about courses and how they can be used for any future career or University course can be found on the following relevant examining board and other websites:

www.aqa.org.uk
www.edexcel.org.uk
www.ocr.org.uk
www.ucas.com
www.thecompleteuniversityguide.co.uk
www.informedchoices.ac.uk/degrees

Careers information can be found on the following websites:

Careers South West: www.careerssw.org

Careers Information: www.careersa-z.co.uk

The following members of staff can be contacted regarding specific option choice matters:

- Mrs Emma Gallagher (Sixth Form Lead) egallagher@southdartmoor.devon.sch.uk
- Mr Neil Whitelaw (Head of Year - Sixth Form) nwhitelaw@southdartmoor.devon.sch.uk
- Miss Julie Randell (Post 16 Careers and Work Experience Coordinator) jrandell@southdartmoor.devon.sch.uk
- Mr Adam Fox (Head of Year 11) afox@southdartmoor.devon.sch.uk

In 2018, both South Dartmoor and Atrium were inspected by OFSTED, and in both inspections '16-19 provision (Sixth Form) was judged to be good.' OFSTED inspectors noted that:



The Sixth Form(s) are well led. Leaders have high expectations of students and set ambitious targets for them. Effective systems are in place to enable leaders to track students' progress closely, and intervene, when necessary, to bolster progress.

A broad range of activities provide students with a rich, diverse and fulfilling school experience and a suitable preparation for life after school. Many students participate in sports, music and Duke of Edinburgh's award activities. They frequently learn about issues like radicalisation, relationships, healthy lifestyles and mental well-being. Students also participate in work-related learning activity in Year 12 and their employability skills are formally accredited.

Students value the high level of support and guidance they receive in their studies. Students, including those who face specific barriers to learning, such as disadvantaged students, receive effective help to catch up if they fall behind.

Over time, the progress made by the students following academic courses such as A levels has been consistently above average.

Post 16 learner support bursary

South Dartmoor Sixth Form have an agreement with Devon County Transport that qualifying students will receive full or partial financial payment of their transport costs from the Learner Support Bursary fund.

Students will be invited to apply for this support during the summer term before enrolment at Sixth Form. Families will need to supply evidence of low income and other criteria.

Further to this, course costs (books, equipment, educational trips and visits etc.) can be supported through the Bursary scheme for qualifying students. Students are invited to apply for this part of the Bursary when they have enrolled for the Sixth Form in September.

The employability award

All students, regardless of the Learning Pathway they are following, are encouraged to achieve the employability award during their time in Post 16 education.

When students leave the Sixth Form, whether it is to employment or university, they will be competing against hundreds of thousands of students looking to secure the best possible opportunities for themselves. Academic achievement is obviously vitally important and our curriculum and pastoral policies support students in making the most of their academic potential. However, nowadays academic success is often not enough and we pride ourselves in helping students stand out from the crowd by pursuing great opportunities beyond the curriculum.

The employability award is supported and accredited by the Devon and Cornwall Business Council and is designed to enhance the employability and university prospects of South Dartmoor Community College Sixth Form students by providing official recognition and evidence of extra-curricular activities and achievements. We run these awards alongside the academic examination courses in order to support students achieve competitive CVs and references. There are many leadership and role model opportunities that Sixth Formers can take advantage of in College that will help students secure the best employment and university opportunities open to them. The award also recognises activities taken outside of College.

On completion of the SDCC employability award, students will be presented with a certificate and will have importantly gained themselves a significantly positive reference that will show that they are a student who is very much willing and capable of going beyond the basic requirements of just attending Sixth Form lessons.

Sixth Form enrichment and extra-curricular opportunities

South Dartmoor Sixth Form is a vibrant and exciting community of which to be a part.

There are plenty of sports activities that students can get involved in to complement study time, in fact sport is an optional feature of the Wednesday afternoon enrichment element. The Sixth Form has a number of sports teams, who play in fixtures against other Post-16 schools and colleges.

The Sixth Form has an active and lively student leadership team and council who not only play an important role in advising the Sixth Form management team of improvements we can make to our provision but additionally organise great social events such as ice-skating, meals out and an annual leavers party. We offer a debating and ethics group as well as opportunities to link with the local community and businesses such as Ashburton Post Office for all the budding business brains out there! For those who are interested in foreign travel and possibly even some volunteering we have run, and will continue to organise, valuable excursions such as World Challenge, Duke of Edinburgh, Ten Tors, as well as cultural excursions to France, Berlin, New York and Italy.

Whatever your area of interest, we will do our best to support you to pursue it and we strongly encourage our students to consider their own development of skills and interests in addition to their formal learning. This might be through taking up a college leadership role, such as being a Sixth Form Prefect, through to involvement in the very many music and performing arts opportunities the college offers – or even both!

Futures are made
in the present



Subject	Qualification	Entry requirements	Subject	Qualification	Entry requirements
		5 GCSEs at grade 4 or above including Maths and English*			5 GCSEs at grade 4 or above including Maths and English*
Maths	A Level	* Maths GCSE minimum Grade 6	History	A Level	* English/History Grade 5
Further Maths	A Level	* Maths GCSE minimum Grade 7	Geography	A Level	* English/Geography Grade 5
Physics	A Level	* Physics GCSE minimum Grade 6 or Double Science 66	Design, Engineer, Construct!	L3	* Maths Grade 5
Chemistry	A Level	* Chemistry GCSE minimum Grade 6 or Double Science 66	Graphics	A Level	* Art & Design related subject Grade 5
Biology	A Level	* Biology GCSE minimum Grade 6 or Double Science 66	Three-Dimensional Design	A Level	* Art & Design related subject Grade 5
Psychology	A Level	* Science or Maths Grade 5	Photography	A Level	* Art & Design related subject Grade 5
Criminology	L3 WJEC	* English/History Grade 5	Fine Art	A Level	* Art & Design related subject Grade 5
Sociology	A Level	* English/History Grade 5	PE	A Level	* Science/PE Grade 5
Health and Social Care	L3 CTEC	*	Sport	L3 CTEC	*
French	A level	* English Grade 5, French Grade 6	Digital Media	L3 CTEC	*
Politics	A Level	* English/History Grade 5	Computer Science	A Level	* Maths and English Grade 5
Philosophy & Economics	A Level	* English/History Grade 5	Design Technology	A Level	* Science or Maths Grade 5
Economics	A Level	* Maths Grade 5	Engineering	A Level	* Science or Maths Grade 5
Certificate of Financial Services	L3	* Maths Grade 5	Music	A Level	* English Grade 5, Music Grade 6, Grade 5 instrumental skills
Business Studies	A Level	*	Spanish	A Level	* English Grade 5, Spanish Grade 6
English Literature	A Level	* English/History Grade 6	Drama & Theatre Studies	A Level	* English Literature Grade 5 or above
English Language	A Level	* English/History Grade 6	Dance	A Level	*
Classical Civilisation	A Level	* English/History Grade 5	Health and Social Care	L2 CTEC	No entry requirements
			Sport	L2 CTEC	No entry requirements

Art (Fine Art)

What will I study?

During the course you will learn a range of Fine Art disciplines such as drawing, painting, sculpture, printmaking and alternative media. You will learn how to communicate visual meaning through Art by creating an expressive response to a personal context, theme or concept. You will also learn how to develop a sketchbook as a visual diary. The course includes visits to galleries and fieldwork. Students are required to work in one or more area(s) of Fine art, such as those listed below:

Drawing and painting, mixed-media, including collage and assemblage, sculpture, ceramic, installation, printmaking (relief, intaglio, screen processes and lithography), moving image and photography.

How will I be assessed?

There are two components to the A Level course. The first component is a personal investigation and this contributes to 60% of the overall grade. The second component is an externally set assignment and this contributes to 40% of the overall grade. Work on the personal investigation starts during the summer term of Year 12. Projects prior to this are used to progress students aptitude in this course so they are ready and mature enough to be successful. We aim each year to involve students in live briefs within the community.

Assessment objectives are the same across all A-level Art and Design exam boards. They include:

AO1: Develop ideas through investigations informed by contextual and other sources, demonstrating analytical and critical understanding.

AO2: Explore and select appropriate resources, media, materials, techniques and processes, reviewing and refining ideas as work develops.

AO3: Record ideas, observations and insights relevant to intentions, reflecting critically on work and progress.

AO4: Present a personal and meaningful response that realises intentions and, where appropriate, makes connections between visual and other elements.

Fine Art and your future career

Non graduate jobs may involve junior designer/marketing assistant, assistant to a professional artist, photographer or designer may be options.

Graduate jobs may involve Arts administrator, Exhibition/display designer, Fashion clothing designer, Graphic Designer, Illustrator, Museum/gallery conservator/restorer, textile designer, advertising, art director, art therapist, picture researcher/editor, secondary school teacher, or visual merchandiser.



Find out more...

Watch a short clip of Ben Mukherjee and Ed Tomlin discussing the benefits of studying Art and Design, including Fine Art.

Entry requirements

5 GCSE grades 9-4 or above. Students must have at least a grade 5 GCSE in Art and Design or related subject area.

It is important that applicants demonstrate a keen interest and commitment to Fine Art.

Specialist facilities

6 dedicated Art rooms of which AT5 is now exclusively the A level Fine Art Studio where each student has their own studio space.

Large darkroom and photographic facilities

'Digital darkroom' with Adobe Photoshop and large format printer, negative scanner and flatbed scanner

Art (Photography)

What will I study?

Art (Photography) is suitable for anyone aspiring to a career in Photography or any related art and design area. Progression routes from here lead to Foundation Studies in General Art and Design or more specialised Photography courses in Further and Higher Education.

Emphasis is placed on learning the visual language of photography within a fine art context. You will work within the specialist area of lens based photography, and learn all the necessary skills and processes to exploit the creative potential of 35mm SLR cameras and black and white processing and printing. You will also learn how to use digital cameras and image manipulating software. Based on your own contextual investigation and understanding of photographers' work you will be encouraged to develop a personal and informed response to given starting points.

How will I be assessed?

There are two components to the A Level course. The first component is a personal investigation and this contributes to 60% of the overall grade. The second component is an externally set assignment and this contributes to 40% of the overall grade. Work on the personal investigation starts during the Summer term of Year 12. Projects prior to this are used to progress student's aptitude in this course so they are ready and mature enough to be successful.

Assessment objectives are the same across all A-level Art and Design exam boards. They include:

AO1: Develop ideas through investigations informed by contextual and other sources, demonstrating analytical and critical understanding.

AO2: Explore and select appropriate resources, media, materials, techniques and processes, reviewing and refining ideas as work develops.

AO3: Record ideas, observations and insights relevant to intentions, reflecting critically on work and progress.

AO4: Present a personal and meaningful response that realises intentions and, where appropriate, makes connections between visual and other elements.

Photography and your future career

As a photographer your career may lead to work in the following areas of photography: Fashion, Fine Art, Advertising, Graphic Design, Architecture, Reportage, Social Documentary and Portraiture. Please see Fine Art and your future career for more general Art and Design career options.



Find out more...

Watch a short clip of Ben Mukherjee and Ed Tomlin discussing the benefits of studying Art and Design, including Photography.

Entry requirements

5 GCSE grades 9-4 or equivalent or above. Students must have at least a grade 5 GCSE in Photography or related subject area. It is important that applicants demonstrate a keen interest and commitment to Photography.

Specialist facilities

- Fully equipped darkroom and a film processing room.
- Two digital suites with 50 dedicated computers.
- The college has a site license for 'Adobe creative suite 5.5. This includes Adobe Photoshop and is installed on all Art department computers.
- College DSLR, compact and 35mm film cameras that students have access to in college to use in our dedicated photography studio or on personal shoots outside of college.

We also run field trips to various locations and galleries and there are a number of opportunities to exhibit your work publicly in the local community.

Biology

What will I study?

Biology is an exciting and challenging academic subject. It is an expanding and rapidly changing area of study, with such further topics as: medicine, biotechnology, genetics, microbiology and many more. It complements chemistry, physics, psychology, sport science and geography.

Content is split into six teaching modules:

Module 1 – Development of practical skills in biology (assessed throughout the course).
Module 2 – Foundations in biology
Module 3 – Exchange and transport
Module 4 – Biodiversity, evolution and disease
Module 5 – Communication, homeostasis and energy
Module 6 – Genetics, evolution and ecosystems

How will I be assessed?

Students' knowledge, application and practical skills are continuously assessed throughout the year using in-lesson strategies, home-learning and end of topic tests. There are regular mock exams based upon exam-style questions to provide both students and staff with a measure of progress. Mock exams are also used to provide feedback on students' exam technique and application of knowledge, both of which are essential for success in this purely exam based course.

For the A-level course, there are external examinations at the end of Year 13. Students have core practicals that are integral to the course and students will be examined on their ability to plan, analyse and evaluate experimental designs within the end of course assessments. Students have their practical skills assessed against the Common Practical Assessment Criteria and will be given a 'pass' if these are of the required standard. This Practical Endorsement will be reported alongside the results.

Biology and your future career

Non graduate jobs may include healthcare jobs (including nursing training), some forms of laboratory work (e.g. lab assistant in a school), work in a dental surgery as an assistant, any job requiring attention to detail and practical skills.

Graduate jobs may involve being a clinical researcher, cytogeneticist, industrial science researcher, life science researcher, medical sales executive, scientific lab assistants and secondary school teacher.



Find out more...

Watch a short clip of Ged Desforge discussing the benefits of studying Biology.

Entry requirements

At least:
In triple science – 6 in GCSE Biology, as well as a 6 in at least one other science (GCSE Physics or Chemistry)
In GCSE Combined Science grade 6
Grade 4 in GCSE Mathematics
Grade 4 in GCSE English

Specialist facilities

There are three dedicated Biology laboratories containing a wide range of apparatus purely available to the Sixth Form biologists, including two high power binocular microscopes that were provided by the Royal Society.

The library has a fantastic range of reference materials which are available for extension or self-led studies.

Business

What will I study?

Studying Business at Advanced Level will give you an insight into the business world which is ever changing and very exciting. The uncertainty of training for jobs which do not yet exist is made much easier when you have a business qualification behind you. A third of graduates regret the degree subject they choose and feel a business related practical degree would have been a more appropriate choice for further study.

Furthermore Business graduates earn considerably more money than most other graduates, well above the national average. A Level Business is an essential foundation for many, if not all careers! There are four themes that make up the A Level in Business. These are: Marketing and People, Managing Business Activities, Business Decisions and Strategy and Global Business.

How will I be assessed?

100% examination based with four written examinations at the end of the A2 year. To be successful students need to be able to think logically and analyse and discuss real situations using business concepts.

Business and your future career

Non graduate jobs and self-employment opportunities may be available to successful Business A level students as they will have an insight into the business world. Positions do exist in management and administration for those with A levels in retail, banking, insurance and manufacturing industries. There are some phenomenal school leaver programmes being developed by local business employers in business admin, accountancy and many more.

Graduate jobs may include advertising account executive, banking manager, chartered accountant, distribution/logistics manager, investment banker, management consultant, marketing executive, personnel officer, public relations officer, retail buyer, retail manager, sales executive and any other business related job for profit and nonprofit organisations.



Find out more...

Watch a short clip of Barry Rodgers discussing the benefits of studying Business.

Entry requirements

You will be expected to gain 5 GCSE passes at grade 4 or above to include grade 4 or higher in Mathematics and English.

Specialist facilities

We have two dedicated Business related rooms in the 6th form centre. The Library offers a range of textbooks and computers to support your studies. We make extensive use of ICT facilities, including many specialist websites.

Chemistry

What will I study?

Chemistry has always been a fascinating subject and the history of chemistry goes back a long way from the alchemy of the dark ages to the pioneering experiments of Rutherford, Geiger and Marsden in the early 20th century. Chemistry is an important part of everyone's life, whether they realise it or not, and chemists are found in a wide variety of organisations; from engineering to medicine to environmental analysis.

You will study the following topics:

Module 1 – Development of practical skills in chemistry
Module 2 – Foundations in chemistry
Module 3 – Periodic table and energy
Module 4 – Core organic chemistry
Module 5 – Physical chemistry and transition elements
Module 6 – Organic chemistry and analysis

How will I be assessed?

Student's knowledge, application and practical skills are continuously assessed throughout the year using in lesson strategies, home learning and end of topic tests. There are regular mock exams based upon exam style questions that provide students and staff with a guide as to the progress being made. Students will be externally assessed for the final A Level at the end of Year 13.

Students have core practicals that are integral to the course and students will be examined on their ability to plan, analyse and evaluate experimental designs within the end of course assessments. Students have their practical skills assessed against the Common Practical Assessment Criteria and will be given a 'pass' if these are of the required standard. This Practical Endorsement will be reported alongside the results.

Chemistry and your future career

Non graduate jobs may include lab assistant, dental assistant, veterinary assistant but these usually require further training.

Graduate jobs may include analytical chemist, biomedical scientist, colour technologist, industrial research scientist, materials engineer, process development scientist, product development scientist, quality assurance officer, research scientist, secondary school teacher, FE or HE lecturer.



Find out more...

Watch a short clip of Ged Desforge discussing the benefits of studying Chemistry.

Entry requirements

At least:
In triple science – 6 in GCSE Chemistry, as well as a 6 in at least one other science (GCSE Biology or Physics)
In GCSE Combined Science – 66
Grade 4 in GCSE Mathematics and English

Specialist facilities

There are three dedicated chemistry laboratories, equipped to a high standard with a very wide range of modern equipment. In addition, the Library has a range of reference materials which are available for extension or self-led studies.

Classics: Classical Civilisation

What will I study?

Classics offers students the opportunity to study the beginnings of the Literature, Theatre and Politics that have shaped Western Civilisation, it is a chance to study the ideas, stories, men and women who have influenced how we think, argue, laugh and cry...

No prior study or knowledge of this subject is necessary, an open and enquiring mind is far more important. The course offers the study of three distinct components, (2 at AS level) each with clear and well-defined content and strong supporting materials, the chance to study both Greece and Rome, and their surrounding worlds, with one component offering the study of both Greek and Roman epic, including the oldest surviving works of literature in the Western literary canon.

How will I be assessed?

The World of the Hero - 40% of the total A level.

An in-depth study in translation of: Homer, exploring the Iliad and Odyssey and Virgil's Aeneid. We explore what it means to be human, your reputation and legacy, the importance of friendship, family, victory, glory and a good death.

Invention of the Barbarian- 30% of the total A level.

How the Ancient Greeks developed their own identity by defining themselves against the Barbarians. We Explore Herodotus' Histories, the Plays 'Persians' and 'Medea' and the importance of the Persian Wars, as well as the myths and portrayal of Amazons and Centaurs in Greek Art.

Beliefs and ideas - 30% of the total A level.

Politics of the Late Republic - The background of the late Republic, Julius Caesar politician and Dictator, Cicero as political philosopher, author and orator, Cato and the Politics of the Optimates. This unit explores some of the great questions of Politics - how to balance the rights of the citizen and the security of the state, the power of the rich and needs of the masses, the motivation of politicians and the means by which they achieve them.

Classics and your future career

This subject is recommended for students interested in progressing to University to study Archaeology, Ancient History, History, English Literature, Art History or Classics. These are higher education subjects traditionally offered by prestigious and Russell group universities. Classicists are highly valued by employers and universities. Thanks to their studies, students learn to think logically, to compile and evaluate evidence and to express themselves clearly and succinctly both orally and in writing. Classicists can make their way into careers as diverse as computing, the civil service, gold dealing, teaching, insurance, journalism, law, accountancy, public relations and the wine trade. (Even Prime Minister)

Past Classics students have gone on to study at a variety of Universities in the UK including Oxford, Exeter, Leicester, Bristol, Southampton, Reading.

Entry requirements

5 GCSEs grades 9-4. You will need to have achieved a minimum of 5 grade in English Literature or History.

Specialist facilities

Dedicated teaching room in the Sixth Form Centre. Potential trip to Italy to include Rome & Pompeii is planned on a bi-annual basis. Other visits will be arranged to the British Museum in London and Roman Baths in Bath.



Find out more...

Watch a short clip of Jared Baldwin discussing the benefits of studying Classics.

Computer Science

What will I study?

A Level Computer Science qualification helps students understand the core academic principles of computer science. Classroom learning is transferred into creating real-world systems through the creation of an independent programming project.



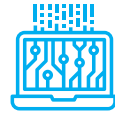
The Arts



Tinkering



Engineering



Science



Mathematics

Computer Science is a practical subject where students can apply the academic principles learned in the classroom to real-world systems. It is an intensely creative subject that combines invention and excitement, and can look at the natural world through a digital prism. The aims of this qualification are to enable learners to develop:

- An understanding and ability to apply the fundamental principles and concepts of computer science, including: abstraction, decomposition, logic, algorithms and data representation
- The ability to analyse problems in computational terms through practical experience of solving such problems, including writing programs to do so
- The capacity to think creatively, innovatively, analytically, logically and critically
- The capacity to see relationships between different aspects of computer science
- Mathematical skills

How will I be assessed?

Student's knowledge, application and practical skills are continuously assessed throughout the year using in lesson strategies, home learning and end of topic tests. There are regular practice questions based upon exam style questions that provide students and staff with a guide as to the progress being made. As part of the assessment students will start a programming project in Year 12 on a topic of their own choice. This will continue through Year 13, and forms 20% of the overall grade. Some time is allocated in class for this, however, the majority of this will be completed independently by students.

Formal Assessment comprises 3 parts:

1. Computer Systems – Written Exam paper over 2 ½ hours (40%)
2. Algorithms and Programming – Written Exam paper over 2 ½ hours. (40%)
3. Programming Project. (20%)

Computer Science and your future career

Graduate and non graduate jobs may include software engineer, digital marketing, cyber security analyst, business analyst, game developer, hardware engineer, project manager, app developer, process development engineer, quality assurance officer, secondary school teacher, FE or HE lecturer.

Many employers will look not just for formal qualifications, but for the sort of critical thinking and problem solving skills that computer science can help to develop.

Entry requirements

At least:

- 5 GCSEs grades 9-4.
- GCSE grade 5 or above in English and Mathematics
- GCSE in Computer Science or Information Technology preferred, although this is not a requirement for students can show determination to do well in computing.

Specialist facilities

There are three computer labs at South Dartmoor, and two more in Atrium. Current teaching staff have experience programming commercially in multiple different programming languages and will support projects in any language accepted by the exam board.



Find out more...

Watch a short clip of Adrian Carlsen-Hedges discussing the benefits of studying Classics.

Criminology

What will I study?

There are four areas to study:

Unit 1 (year 1) Changing awareness of crime: At the end of this unit, you will have developed skills to differentiate between myth and reality when it comes to crime and to recognise that common representations may be misleading and inaccurate; the importance of changing public perceptions of crime; the skills to plan a campaign for change in relation to crime; for example to raise awareness, change attitudes or change reporting behaviour.

Unit 2 (year 1) Criminological theories: At the end of this unit you will have developed the skills to evaluate some criminological theories (why do people commit crimes?) and know there are debates within the different theories. You will understand how changes in criminological theory have influenced policy. You will also have gained the skills to apply the theories to a specific crime or criminal in order to understand both the behaviour and the theory.

Unit 3 (year 2) Crime Scene to Court Room: At the end of this unit you will have developed the skills to analyse evidence, review criminal cases and evaluate the evidence in the cases to determine whether the verdict is safe and just.

Unit 4 (year 2) Crime and Punishment: At the end of this unit, you will consider such questions such as “Why do most of us tend to obey the law even when to do so is against our own interests?”, “What social institutions have we developed

How will I be assessed?

Units 1 and 3 will use controlled assessment.

Units 2 and 4 will be assessed externally.

Where could this take me?

This level 3 Diploma is offered to students who have a keen interest in crime. You need to be non-judgemental, be very interested in people, society and crime, be able to work under pressure, look to make contacts outside of college, be innovative and really motivated. It is an intense two year course for 4.5 hours per week. There will be regular homework and assignments, you have to be happy to make presentations to the class and work in groups. The course is taught in the same way as A levels are taught, with the same expectations on students to achieve high standards in their work. Students may find some of the content disturbing given the nature of crime, although all topics are handled sensitively.

Where could this take me?

UCAS points: An A* grade would receive 56 UCAS points. The main purpose of the WJEC Level 3 Applied Diploma in Criminology is to use the qualification to support access to higher education degree courses, and would be especially useful if applying for; BSc Criminology, BA Criminology, BA Criminology and Criminal Justice, BSc (Hons) Criminology and Psychology, LLB (Hons) Law with Criminology, BA (Hons) Criminology and Sociology, BA (Hons) Criminology, BSc (Hons) Psychology and Sociology, BSc Criminology with Law. Alternatively, the qualification allows learners to gain the required understanding and skills to be able to consider employment within some aspects of the criminal justice system, e.g. the National Probation Service, the Courts and Tribunals Service or the National Offender Management Service.

Entry requirements

5 GCSEs grades 9-4. GCSE grade 5 or above in Geography or History, or Religious Studies.

GCSE grade 5 or above in English and Mathematics

Specialist facilities

Dedicated social science classroom in the Sixth Form centre.

Criminology links well with Sociology, Psychology, Philosophy & Ethics, Politics.



Find out more...

Watch a short clip of Jared Baldwin discussing the benefits of studying Criminology.

Dance

What will I study?

A level Dance is a specialist Performing Arts course which provides students with the opportunity to broaden their artistic experience through Dance. Students will gain experience of performing and choreographing with a view to appreciating professional work. The theoretical aspects of A level Dance offer detailed knowledge in a number of specialised areas.

Component 1

Choreography & Performance

1. Solo performance linked to a specified practitioner within an area of study
2. Performance in a quartet
3. Group choreography

Component 2

Critical Appreciation

- Knowledge, understanding and critical appreciation of two set works:
- One compulsory set work within the compulsory area of study.
 - One optional set work within the corresponding area of study, from a choice of four.

”

Dancing stimulates the mind, body and soul. It has been proven to increase cognitive strengths and improve self-worth.



Find out more...

Watch a short clip of Rachel Lewis discussing the benefits of studying Dance.

How will I be assessed?

Component 1

External examiner visits between March and May

Worth 50% of A-level

Examined in second year of course

Component 2

2½ hour written paper of short answer questions and essays

Worth 50% of A-level

Examined in second year of course

Dance and your future career

Non graduate jobs may include junior roles within a dance school, gym or sports centre or working in an administrative role within an arts organisation. Jobs requiring creative thinking and collaboration with colleagues or members of the public are well suited for students having studied Dance A level. Dance offers a wide range of transferable skills.

Graduate jobs may include teaching in Primary or Secondary schools or lecturing within Further or Higher Education. Past students have gone on to careers as performers, arts administrators, community dance artists, dance critics, dance or arts therapists, choreographers, arts development officers, physiotherapists and many more.

Entry requirements

5 GCSE passes at grade 4 or above. All students should show a previous interest in the Performing Arts and Dance i.e. have taken GCSE or studied it as an outside interest. Commitment and enthusiasm are the most important constituents.

Personal Requirements

Commitment to professional workshops, theatre trips, extra-curricular activities including Sixth Form Company and Early Bird technique.

Dance Kit

Black top & black leggings/dance trousers.

Specialist facilities

Specialist Dance studio with sprung wooden dance floor and dance theory room.

Design and Technology

What will I study?

With our increasing demand for products to be ever more efficient, of high quality and with the minimum environmental impact, the work of the designer has never been more challenging and exciting.

The aims of the course are to:

- Develop student's knowledge, understanding, skills and application for designing products
- Develop a student's ability to design and make products that are fit for purpose; satisfy wants or needs; enhance our day-to-day lives
- Give students the opportunity to demonstrate their design and technology capability
- Develop skills in planning, research, analysis, product development, project planning and evaluation.

Good design is vital to our world and economy. It is important, therefore, that we enthuse future designers with a passion for designing their future.

How will I be assessed?

Technical principles- Written exam: 2.5 hours, 120 marks, 30% of A-level. Mixture of short answer and extended response.
Designing and making principles - Written exam: 1.5 hours, 20% of A-level. Questions:

Section A- Product analysis-30 marks. Up to 6 short answer questions based on visual stimulus of product(s).
Section B-Commercial manufacture-50 marks. Mixture of short and extended response.

Practical application of technical principles, designing and making principles.

A substantial design and make project. 100 marks. 50% of final A-level

Design and Technology and your future career

Non graduate jobs may include apprenticeships in construction, manufacturing, engineering, junior positions in computer aided design or engineering.

Graduate jobs may include exhibition/display designer, fashion clothing designer, production engineering, quality assurance officer, technical sales engineer, textile designer, product design, architecture – to name but a few.



Find out more...

Watch a short clip of Don Phipps the benefits of studying Design and Technology.

Entry requirements

The syllabus has been designed for students with at least 5 GCSE passes at grade C or equivalent grading 5 or above to include English and Maths. It assumes a grade C at GCSE in a Design/Technology based subject, but students without this qualification or experience may be able to follow with success a course based on this syllabus, depending on consultation with the course tutors.

Specialist facilities

Students will have access to all areas of the department as and when appropriate. However, the Technology Clean Area (TCA) will be the students' main teaching base. The room is equipped with network computers, digital projection facilities and interactive whiteboard, allowing for the production of accurate, interactive and professionally produced coursework. Access to CAD/CAM facilities by students within the department will be an integral part of the AS/A2 course.

Digital Media

What is the course about?

This innovative course is aimed at students who wish to pursue a career within the fast-paced digital media industry. The course delivers a specialist curriculum allowing students to develop specific practical skills alongside learning about the digital media industry and professional practice.

Why should I choose the course?

This course is ideal for those who have previously studied computing, graphics or media at GCSE and who now wish to further develop their creative and technical skills in order to progress onto university or employment within the digital media industry.

What will I learn?

The course delivers a specialist curriculum allowing students to develop specific practical skills as well as learning about the new digital media industry and professional practice. Students complete project briefs that allow them to experiment with a wide range of roles and explore interactive and digital media production techniques whilst developing their theoretical knowledge of the industry.

Topics include communication within the digital media industry, research techniques, game design, production management, interactive media design, digital and motion graphics, designing idents, web animation, animation, marketing and public relations, digital communication, web authoring, digital video production and working to client briefs. You will expand your knowledge of historical and contemporary media products in order to influence and inspire your own work.

You will be continuously assessed based on the projects you complete throughout the year. You will receive both verbal and written tutor feedback and will take part in peer assessments. Assessment is through set assignments and project coursework. All students will take part in an end of year show where they will have the opportunity to showcase their work.

What will the course lead on to?

Students who complete the full L3 in Interactive and Digital Media have a number of progression pathways including employment and further or higher education. Students who achieve on the L3 digital media course can progress onto the HNC in Media at Warrington & Vale Royal College or apply to a digital media related degree programme at a national university. Careers within this field are varied and include; website designer, animator, social media manager, content developer, marketing manager, computer graphic designer among many more.

Entry requirements

5 GCSEs at grade 4 or above including Maths and English.

Specialist facilities

There are three computer labs at South Dartmoor, and two more in Atrium. Current teaching staff have experience programming commercially in multiple different programming languages and will support projects in any language accepted by the exam board.

Drama and Theatre Studies

What will I study?

Successful Theatre Studies' students will be regarded by universities and employers as excellent communicators, as people who are committed and reliable team members, able to respond positively under pressure. They will be people who are confident and emotionally intelligent and have a sound knowledge of theatre.

We have a fine reputation of excellent student work at A level Drama & Theatre Studies. Student practical work has been selected to be filmed as A grade examination exemplar material. Any student who wishes to work with people, leading and managing teams or work in theatre should seriously consider the course. Students will develop their co-operative and creative skills.

The structure of the course is designed to give students the opportunity for as much practical work through set texts and devised drama. Students will be required to undertake a degree of theatrical research and academic enquiry to support the practical work.

How will I be assessed?

AQA's A Level in Drama and Theatre consists of two components that are externally assessed and one component that is assessed by the centre and externally moderated by AQA. The components include:

- Component 1 - Drama and Theatre: study of two set texts and live theatre study (written assessment)
- Component 2: Creating Original Drama (practical)
- Component 3: Making Theatre (practical)

Drama and your future career

Non graduate jobs may involve working in an administrative role within a theatre, leading and managing teams of people.

Graduate jobs may include actor, drama therapist, secondary school teacher, theatre director, theatre stage manager, wardrobe manager, arts administrator, community arts worker, journalist, programme researcher, television production assistant.



Find out more...

Watch a short clip of Amy Small discussing the benefits of studying Drama.

Entry requirements

5 GCSEs grades 4-9. You will need to have achieved a minimum of grade 5 in English Literature.

Specialist facilities

We are very fortunate to have three specialist Drama Studios. These provide a superb working environment.

Students are required to take part in theatre visits and workshop and there will be opportunities to get involved in extra-curricular activities.

English Language

What will I study?

Do you want to make friends and influence people? Manipulate the way that people think? Be the annoying person that spots traps and errors in every news story? English Language A-level is your tool to all of these and more.

The subject introduces students to the linguistic study of written and spoken language in its many forms. Through lively discussion and independent investigation we will explore the way that language varies according to context; we'll look at accent, gender, age and social class and examine the impact these things have on language and we will also look at how producers of texts use these things to have an impact on us.

You will be the one of your friends who says things like 'Look at the way the non-finite clause in that headline has foregrounded women!' or 'Yes, this menu is definitely positioning us as upper middle-class'. You will also be the person who is able to critically evaluate the effects of language choice using a range of new terminology and perspectives. Don't be fooled into thinking that English Language is more of the same. It is not – it is much more interesting.

How will I be assessed?

Paper 1 : Language, the Individual and Society. (40% of overall grade)

Paper 2: Language, Diversity and Change. (40% of overall grade)

Coursework:

1 x Language Investigation. This is completely free choice and allows you to explore an area that interests you.

1 x Original Writing. Again, this is free choice. You will create a piece of original writing based on a style model (20% of overall grade)

English and your future career

Non graduate jobs may include marketing or sales assistants, jobs requiring a lot of communication or telephone work, trainee news reported, library assistant, or tour guide.

Graduate jobs may include teaching English as a foreign language, Higher Education (HE) lecturer, Primary/Secondary school teacher, advertising account executive, advertising copywriter, charity officer, commissioning editor, marketing executive, newspaper journalist, programme researcher, broadcasting/film/video, public relations officer, TV, film, or video producer.



Find out more...

Watch a short clip of Kate Chambers discussing the benefits of studying English Language.

Entry requirements

- 5 GCSEs grades 9-4
- A grade 6 or above in English Literature.

Most Importantly: An enthusiasm for, and commitment to, reading and discussing Literature.

Specialist facilities

The English Department offers expertise and enthusiasm. Students will be advised on wide reading and a variety of fiction is available from the College Library and the English Department.

English Literature

What will I study?

English Literature students will be introduced to a range of poetry, drama, novels and short stories. The course features early examples of the genres and modern texts. Throughout the course students will be encouraged to broaden their experience of Literature through wide reading and self-supported study.

The course aims to promote a lively and informed appreciation of literature. Through reading, discussion and essay writing, students will gain confidence and skill in forming and communicating responses to texts. Students will learn to write interesting, detailed assignments which reflect their increasing experience and knowledge of literature. The English Literature A Level is the preferred option for many Universities as it gives you experience in analytical, interpretive and evaluation skills. It is a facilitating course which means it will help with a variety of Degree courses.

How will I be assessed?

Paper 1: Tragedy Through Ages: Othello, Tess of the D'Urbervilles and Death of Salesman. (40% of overall grade)

Paper 2: Social and Political Protest Writing: The Kite Runner, The Handmaid's Tale and Songs of Innocence and Experience. (40% of overall grade)

Coursework:

2 x 1500 word essays. The first will respond to a novel of your choice and the second will respond to a collection of poetry of your choice. You'll analyse both of these texts through a critical lens.

English and your future career

Non graduate jobs may include marketing or sales assistant, jobs requiring a lot of communication or telephone work, trainee news reporter, library assistant, or tour guide.

Graduate jobs may include teacher of English as a foreign language, HE lecturer, Law, Journalism, Primary/Secondary school teacher, Editor, Author or Publisher.



Find out more...

Watch a short clip of Kate Chambers discussing the benefits of studying English Literature.

Entry requirements

- 5 GCSEs grades 9-4
- A grade 6 or above in English Literature.

Most Importantly: An enthusiasm for, and commitment to, reading and discussing Literature.

Specialist facilities

The English Department offers expertise and enthusiasm. Students will be advised on wide reading and a variety of fiction is available from the College Library and the English Department.

Economics

What will I study?

Economics covers many of the major topics of discussion in the world today; Government support and how we will pay for dealing with the Covid 19 pandemic; Globalisation, international trade and the growth of protectionism; Brexit; how resources are allocated and accounting for social externalities such as inequality, pollution and global warming.

Economics prepares you for the world of work, including jobs in business, industry, civil service and government. On average Economics graduates earn 60% more than non-graduates which is higher than most other graduates. (ONS)

How will I be assessed?

A Level Economics is assessed with three examinations, each lasting two hours.

Paper 1 is based on markets and business behaviour. Questions will be focused on the nature of economics, how markets work, market failure, government intervention, business growth, objectives, revenues, costs and profit, market structures and the labour market.

Paper 2 is based on the national and global economy. Questions will be focused on business growth, business objectives, revenues, costs and profit, market structures, labour market, government intervention, international economics, poverty and inequality, emerging and developing economies, the financial sector and the role of the state in the macro-economy.

Paper 3 is based on microeconomics and macroeconomics. This paper is synoptic and questions will be based on any of the themes linked to Papers 1 and 2.

Economics and your future career

Non graduate jobs may include work in politics, banking and insurance.

Graduate jobs may include accountancy, actuarial work, corporate, commercial and investment banking, insurance underwriter, investment analyst, management consultant, market research executive, political party research officer, statistician, or trader.



Find out more...

Watch a short clip of Barry Rodgers discussing the benefits of studying Economics.

Entry requirements

You should be interested in current affairs and regularly watch the news and read newspapers. You will be expected to gain 5 GCSE passes at grade 4 or above to include grade 6 or higher in Mathematics and 5 in English.

Specialist facilities

We have two dedicated Business related rooms in the 6th form centre. The Library offers a range of textbooks and computers to support your studies. We make extensive use of ICT facilities, including many specialist websites.

We have two dedicated Business related rooms in the 6th form centre. The Library offers a range of textbooks and computers to support your studies. We make extensive use of ICT facilities, including many specialist websites.

French

What will I study?

The course will convert your GCSE pass to a high level of spoken and written grammatical accuracy, personal communication and intimate knowledge of French speaking countries. At all times the culture of the relevant countries is highlighted. The components of the course are social issues and trends in France, political and artistic culture and grammar. Within the optional component are literary texts and films.

How will I be assessed?

The examination comprises three aspects. The first is a mixed skill paper which examines the candidate's proficiency in listening, reading and writing in French. The second is a writing paper which requires full answers in French in response to a set text and a film.

The speaking test includes discussion of one of four sub-themes from aspects of French-speaking society: current trends, aspects of French-speaking society: current issues, artistic culture in the French-speaking world or aspects of political life in the French-speaking world.



Find out more...

Watch a short clip of Dave Ray discussing the benefits of studying French.

Where could this take me?

Whatever your chosen career, possession of skills in one or more Modern Languages will, without any doubt, make you a more flexible, adaptable and mobile citizen of the world. A large number of university courses can be supplemented by a Modern Language, thus opening up career opportunities extensively.

French and your future career

- On average, people who use languages in their jobs earn 8% more.
- 75% of the world's population does not speak English at all.
- Employers will like you because you show you are confident & communicate well. People who speak another language get better jobs & salaries than those who only speak their own language
- You'll be speaking an international language.
- 17% of all the business in the whole world is done in French.
- French is the second language of the Internet.
- More than 4,000 international companies have invested in France.

So, you still think French is only any good to you if you want to be a teacher, translator or interpreter? Well, you'll be pleased & surprised to know that 90% of jobs where languages are asked for are not those sorts of jobs!

Entry requirements

5 GCSE passes at grade 4 or above to include English at grade 5 and grade 6 in French.

Specialist facilities

Fully equipped Modern Language classrooms.

Geography

What will I study?

The world in which we live is changing. Global awareness of the very details that are changing are rapidly shared with us all via 24/7 media. Geography allows you to see why and how it is changing. Sir David Attenborough has said that “No one will protect what they don’t care about and no one will care about what they have not experienced”. This course continues to open your eyes to the fascinating detail of our planet and the way its inhabitants chose to interact with it and themselves.

Areas of study include such issues as tectonic processes and hazards; landscape systems, processes and change—including optional sub-topics from which students choose one from two: glaciated landscapes and change or coastal landscapes and change; the water cycle and water insecurity; the carbon cycle and energy security, climate change futures; superpowers and global development. Many renowned commentators have said (sic) the “the biggest threat to this planet is the belief that someone else will fix it”. This Department consistently develops ethically and socially aware agents of change taking their environmental consciences with them to university. Work with us to join them.

You will also get the opportunity to undertake a personal investigation that will evaluate and reflect on fieldwork investigations. The usual highlight of the course is the residential field trip to the Isle of Arran with an optional enrichment trip to Iceland being planned.



Find out more...

Watch a short clip of Chris Hodges discussing the benefits of studying A-Level Geography.

How will I be assessed?

There are four units for assessment. The first three units are formal examinations. Papers 1 and 2 are two hour exams that test candidates on some of the topics listed above. Paper 3 is an exam lasting one hour and forty-five minutes and is a synoptic assessment of geographical skills, knowledge and understanding. The final unit is the coursework investigation that is internally assessed and externally moderated. The coursework involves producing a written report of 3000–4000 words that incorporates fieldwork data (collected individually or as part of a group) and own research and/or secondary data.

Geography and your future career

With the business world waking up to the importance of environmental accountability and with sustainable development projects gaining credible status, relevant, stimulating and interesting jobs are growing fast.

career-descriptions.co.uk/geographer-career-description

Graduate jobs may include cartographer, disaster and logistics manager, environmental consultant, geographical information systems manager, remote sensing scientist, secondary school teacher, town planner, transportation planner, local government administrator, nature conservation officer, tourism officer, urban general practice surveyor, aid worker, or travel writer.

Entry requirements

5 GCSEs grades 9-4 including Geography and Science and English and Mathematics at grade 5 or above.

Specialist facilities

Geography lessons will be taught on the main campus using specialist rooms. A wide range of textbooks and resources are used on the Geography course. Subscription to “Topic Eye” and the purchase of revision guides is encouraged.

Health and Social Care

What will I study?

For the Certificate award (1 Year) there are three units which are:

Unit 1: Building positive relationships in health and social care (portfolio)

To introduce the many relationships encountered in the health and social care sector, and an understanding of how these relationships are essential to the delivery of safe and effective care and support within the sector.

Unit 2: Equality diversity and rights in health and social care (Exam)

This unit will help you to understand the implications of diversity on practice and also the effects of discriminatory practice on individuals who require care or support, you will also gain an appreciation legislation can support anti-discriminatory practice.

Unit 3: Health, safety and security in health and social care. (Exam)

This unit introduces you to health, safety and security in health and social care. It will include legislation, policies and procedures and how they work to reduce risks within the health and social care sector.

For the Extended Certificate award (2 Years) there are 3 further units. 1 compulsory and 2 option units.

Unit 4: Anatomy and physiology for health and social care (Exam)

This unit introduces the basic structure, organs and functions of the body systems involved in everyday activities and maintenance of health. (Compulsory)

- **2 more units from a list of optional portfolio units.**

How will I be assessed?

The course is assessed using a variety of methods which include:

- External examinations
- Written assignments
- Projects
- Case studies

Health and Social Care and your future career

Non graduate jobs may include care assistant, some areas of nursing and social care, and some administrative positions with NHS or Social Services. Graduate jobs may include lifestyle consultant, health promotion specialist, health service manager, nutritional therapist, physiotherapist, social worker, charity officer, civil service administrator, counsellor, FE lecturer, local government administrator, medical sales executive, sports administrator. It is also widely accepted and respected for numerous NHS graduate careers, such as Nursing and Midwifery.



Find out more...

Watch a short clip of Martin O'Halloran the benefits of studying Health and Social Care.

Entry requirements

Cambridge Technical level 3 Certificate in Health and Social Care is equivalent to one AS level and the Cambridge Technical Extended Certificate is equivalent to one A-Level therefore has the same minimum entry requirements as for A levels:

5 GCSEs grades 9-4 to include English at grade 5.

Specialist facilities

Students will have access to a variety of texts, journals, and information technology. There will also be visits to local care facilities, speakers from the various professions, organised work experience and the opportunity to attend open days and student conferences.

History

What will I study?

If you enjoy discussing and debating major events of the past, and making connections between those events and the world we live in, then History will be a great option for you. We live in a world where we are bombarded with information, much of it mis-information. History will help you navigate that world. We are really passionate about what we do and we hope to make you to be as enthusiastic about the past as we are.

The course will consist of both European and British History, as well as Modern and Early Modern History (universities look for you to have studied a range of periods). Skills you will develop include exploring the significance of events and key individuals, the causes and consequences of major historical events, change and continuity across time periods, and also historical interpretations of the past.

You will also develop the ability to analyse and evaluate historical sources, and to debate and discuss relevant issues. The course is excellent preparation for university both in terms of the content you cover and the research/study skills you will develop.

How will I be assessed?

There are three exam papers that will be taken at the end of Year 13 for the full A Level. Each exam is weighted to contribute 33.3% to the overall A Level grade. There are two exam papers for the AS accreditation, each paper is worth 50% of the overall AS Level. Should you opt for this, these exams would be taken in May of Year 12.

History and your future career

History provides a great platform for a variety of careers. These include: academic researcher, archivist, archaeologist, heritage manager, lawyer, politician, solicitor, museum education officer, academic librarian, civil service, broadcast or newspaper journalist, editorial assistant, museum/gallery curator, teacher, marketing executive, record manager, genealogist, arts administrator, marketing executive, sales executive, police officer. History will benefit you in any job or career where effective communication and the ability to make sense of complex issues and identify the most important points is important.

History is a highly respected academic subject and is an ideal foundation for many Arts and Social Science degrees, including Law, Economics, Politics and Archaeology, as well as History and Classics. History is valuable for any academic career path you wish to pursue. It also has a high status with many employers including the Law and Armed Forces, and can lead to careers such as journalism and politics.



Find out more...

Watch a short clip of Craig Axford discussing the benefits of studying History.

Entry requirements

Ideally, 5 GCSE passes at Grade 4 or above with History and English at grade 5 or above. GCSE History is not essential to study A level History. The ability to write clearly and concisely is important though, so for students who have not studied History at GCSE, we would look for a grade 5 in English.

Specialist facilities

There are designated History classrooms at SDCC. We recommend core texts for you and base our units around them to keep things simple for you. The library has a huge array of history books for you to borrow.

Mathematics

What will I study?

The AS and A2 level Mathematics courses we offer build from GCSE (9 – 1) level Mathematics and introduce calculus and its applications. They emphasise how mathematical ideas are interconnected and how mathematics can be applied to model situations using algebra and other representations, to help make sense of data, to understand the physical world and to solve problems in a variety of contexts, including social sciences and business. They prepare students for further study and employment in a wide range of disciplines involving the use of mathematics.

The A level course is a linear qualification with content covering the following four broad areas of study:

1. Mathematical processes
2. Pure mathematics
3. Mechanics
4. Statistics

AS level Mathematics follows similar themes, introducing many of the concepts and topics outlined above.

How will I be assessed?

A-level: This is a linear course, with all assessment by examination at the end of the two years. This will consist of three separate written papers, each two hours long.

AS-level: Two examination papers, completed after one year of study, covering aspects of each of the four broad areas outlined above.

Mathematics and your future career

Mathematics is a subject which supports study in many diverse areas, including the sciences, economics, business, the humanities and sports studies.

Mathematics AS and A level are not just a stepping stone to a degree in Mathematics, it is also a requirement for many other courses and careers. These range from engineering to accountancy, medicine to computer science and statistics to business management.

For more information see: www.mathscareers.org.uk



Find out more...

Watch a short clip of Katie Holt discussing the benefits of studying Mathematics.

Entry requirements

5 GCSEs grades 9-4. Students would be expected to have studied Mathematics at the Higher Tier and achieved at least a grade 6 (preferably a 7 or above).

Specialist facilities

Students are encouraged to access resources via use of ICT, including portable devices in the classroom. There is an expectation that ICT will be used in teaching and learning mathematics, allowing students to study graphical and statistical topics using Autograph, Geogebra and Excel. All students will be issued an electronic textbook as well as access to the MEI support website 'Integral'.

Students will need an A-level standard calculator.

Further Mathematics

What will I study?

The subject is taken alongside AS/A2 level Mathematics. Further Mathematics is both deeper and broader than A level Mathematics. AS and A level Further Mathematics build from GCSE, AS and A level Mathematics. As well as building on algebra and calculus introduced in A level Mathematics, the A level Further Mathematics core content introduces complex numbers and matrices, fundamental mathematical ideas with wide applications in mathematics, engineering, physical sciences and computing. The non-core content includes different options that can enable students to specialise in areas of mathematics that are particularly relevant to their interest and future aspirations.

The course content is listed below, under four headings:

1. Mathematical processes
2. Core pure mathematics
3. Major optional content: Mechanics, or Statistics
4. Minor optional content from: Mechanics, Statistics, Modelling with algorithms, Numerical methods, Extra pure or Further pure with technology

* A level only

** AS levels students will cover two of these options

How will I be assessed?

A-level: This is a linear course, with all assessment by examination at the end of the two years. This will consist of three separate written papers, covering each of the headings 2, 3 and 4 above.

AS-level: Three examination papers, completed after one year of study, covering the core pure and two options as outlined above.

Mathematics and your future career

Further Mathematics should be considered by anyone hoping to do a mathematics degree, but it is also an excellent A-level for those considering studying such subjects as Engineering, Science, Computing or Finance/ Economics. Taking Further Mathematics to AS or full level will support your study of A level Mathematics greatly and can help your transition to degree level courses.

For more information see www.furthermaths.org.uk

Entry requirements

A full Further Mathematics AS/A2 level is only suitable for those students achieving at least a grade 7 in Mathematics at GCSE (preferably 8/9).

Specialist facilities

Students are encouraged to access resources via use of ICT, including portable devices in the classroom. There is an expectation that ICT will be used in teaching and learning mathematics, allowing students to study graphical and statistical topics using Autograph, Geogebra and Excel. All students will be issued an electronic textbook as well as access to the MEI support website 'Integral'.

Students will need an A-level standard calculator and may benefit from using a graphical calculator.

Music

What will I study?

Music is constantly evolving; inspiring creativity and expression in a way that no other subject can. This A level brings listening, performance and composition to life in new and engaging ways, and links to the world around us like never before.

Component 1

Appraising Music:

This involves listening, analysis and contextual understanding.

Component 1

Performance:

This involves solo and/or ensemble performing as an instrumentalist, or vocalist and/or music production (via technology).

Component 1

Composition:

This involves the creation of two compositions. The first must be related to a brief and the second is a free composition.

How will I be assessed?

You will be assessed on Component 1 with an exam paper with listening and written questions using excerpts of music. This contributes to 40% of A-level marks. Assessment of Component 2 is by a minimum of ten minutes of performance. This is externally marked by examiners and contributes to 35% of A-level marks. Component 3 is by a composition that is externally marked by AQA examiners. It contributes to 25% of A-level marks.

Music and your future career

A level Music is required for entry into Music School or into Music degree courses. There are also a wide variety of vocational music courses which can be studied post-18. Music especially complements dance choreography and is viewed positively by HE/FE dance tutors.

Graduate jobs may include composer, editorial assistant, magazine journalist, musician, music librarian, music therapist, private music teacher, community arts worker, film production manager, museum / art gallery curator, or musical / festival organiser.



Find out more...

Watch a short clip of Rachel Lewis discussing the benefits of studying Music.

Entry requirements

5 GCSEs grades 9-4. You will need to have achieved a minimum of English at grade 5. 9-6 grade at GCSE Music or equivalent ability (Grade 5 instrumental skills). An ability to read stave notation. Grade 5 theory is highly beneficial. Students will be expected to practise daily, attend College ensembles and concerts.

Specialist facilities

Two purpose-built music blocks which include four specialist teaching rooms, recording studio, practise suite, computer studio software, grand piano, music class equipment and more.

Personal Finance

What will I study?

Learn great life skills that can save you and your friends a fortune and also set you up in some incredibly well paid jobs. Students are encouraged to become responsible borrowers and sensible savers, and to appreciate of the need for financial planning throughout their life. You will learn about financial products such as different bank accounts, mortgages, pensions, loans, credit cards, insurance Tax, budgeting, debt management, investing etc.

How will I be assessed?

The diploma is graded just like an A Level A*-E. The units are Modular, so you sit exams in Jan/May Year 12 and Jan/May Year 13. Resits are built into the course and occur in March/June each year! Each unit is assessed by 2 papers, one multiple choice and one extended case study responses. You must pass all exams, after resits, to grade in the course.

Unit 1 Financial Capability for the immediate and short term

Students will gain an appreciation of why money is important, by focusing on what money is; attitudes to it; and how it can affect life choices

Unit 2 Financial Capability for the medium and long term

Students will gain the ability to plan and manage their financial needs in the medium and long term, with particular reference to the importance of the need to budget for future aspirations and life events.

Unit 3 Sustainability of an Individuals finances

Highlights the importance of financial stability for the individual; to enable the development of skills to make sure that an individual's financial education is sustained over a period of time.

Unit 4 Sustainability of the Financial Services System

Explores the financial services system and looks at how financial services providers work and compete with one another.

Personal Finance and your future career

Non graduate jobs are available across the banking and financial sector, with many national companies offering very attractive school leaver.

Graduate jobs may include bank manager, chartered accountant, investment banker, stockbroker, actuarialist, insurance broker, independent financial advisor and many more.

Entry requirements

The Diploma in Financial Studies is equivalent to half an A Level in Year 12 and a full A level in Year 13. You will be expected to gain 5 GCSE passes at grade 4 or above to include Mathematics and English.

Specialist facilities

We have two dedicated Business related rooms in the 6th form centre. You get an annually updated textbook for each unit of study. We make extensive use of ICT facilities, including many specialist websites, including a full online syllabus and quizzes set by LIBF.

Philosophy & Ethics

What will I study?

The areas of study in this course are fascinating; Philosophy being the original art of thinking from which all other academic subjects have arisen; and Ethics (being a branch of Philosophy itself) which is the study of how human beings ought to behave.

You will study such topics as 'the self and immortality' – examining Christian teaching on the soul, afterlife and election, including: Aquinas on the afterlife how these ideas affect individual and communal moral behavior; 'soul, mind and body' - the philosophical language of soul, mind and body, metaphysics of consciousness, including: substance dualism & reductive materialism, with reference to: Descartes, Ryle, Penrose, Anscombe. Within the field of ethics, an example study topic is Conscience. This involves considering ideas on whether conscience is innate or acquired, specifically relating to the arguments of both Aquinas and Freud, as well as considering the role of conscience in ethical decision making.

You will be well supplied with texts and given clear guidance on what to read and when and how to organise your work. Your essay writing skills will mature to a level which will benefit essay writing in other academic courses and give you confidence to cope with essay writing at degree level. You will have opportunities to develop your timing skills and final exams will be more routine than daunting.

How will I be assessed?

There are 3 units: Philosophy, Ethics and Christianity. Each unit is worth 33% of the final grade. This course is 100% exam and there is no coursework.

Philosophy and Ethics and your future career

Many A level Philosophy & Ethics students have found the subject a relevant discipline for future careers in law, the media, history, politics, health, social services and any career where philosophical and ethical issues are important.

Graduate jobs may include counsellor, charity officer, housing advisor, journalist, adult education lecturer / tutor, HE lecturer, teacher, lawyer, medical professionals like nurses, doctors.

Find out more...

Watch a short clip of Danny Murray discussing the benefits of studying Philosophy & Ethics.



Entry requirements

5 GCSEs grades 9-4. GCSE Religious Studies provides a good basis for coping with this course. Essay writing is a necessary key skill, so a grade 5 or higher in GCSE English Language/ English Literature is required. Enjoying reading and being able to handle controversial subject matter are essential.

Specialist facilities

A number of texts are provided. Opportunities arise for visiting other establishments for conferences and lectures and for meeting other students.

Students are encouraged to purchase their own course textbook.

Physics

What will I study?

Physics is a subject that has great resonance in many aspects of everyday life. It is the subject that allows students to explore, explain and understand much of modern technology as well as taking a deeper look at the underlying fundamental aspects of Physics that will be familiar to students from GCSE.

The main topics of study are:

Practical Circuits; Waves and their interactions; Mechanics of motion; Quantum Mechanical Effects; Gravitational and Electrical Fields; Radioactivity and Medical Physics.

How will I be assessed?

Students' knowledge, application, and practical skills are continuously assessed throughout the year using in-lesson strategies, home-learning, and end of topic tests. There are regular mock exams based upon exam-style questions to provide both students and staff with a measure of progress.

Mock exams are also used to provide feedback on students' exam technique and application of knowledge, both of which are essential for success in this purely exam based course.

For the A-level course, there are external examinations at the end of Year 13. Practical investigations are integral to the course and students will be assessed on their ability to plan, analyse and evaluate experimental designs within the end of course assessments. However, their practical skills will not contribute to their end result.

Physics and your future career

A level Physics allows you access to many career opportunities. These include: physics, geophysics, environmental physics, engineering, education, medicine, computing, energy industries, civil service, materials science and the communications industries.

Specific degree courses include: physics, aeronautical engineering, aerospace engineering, civil engineering, mechanical engineering, electrical and electronic engineering, computer systems and software engineering.



Find out more...

Watch a short clip of Ben Lovick discussing the benefits of studying A-Level Physics.

Entry requirements

At least:

- In triple science – 6 in GCSE Physics, as well as a 6 in at least one other science (GCSE Biology or Chemistry).
- In GCSE Combined Science – 66

Grade 6 in GCSE Mathematics and English

Specialist facilities

There are two dedicated Physics laboratories, equipped to a very high standard with a range of modern equipment. Examples include: dual beam oscilloscopes, 'spot' galvanometers, electron deflection tubes, linear air-track, platinum resistance thermometer, Wheatstone Bridge, potentiometer and micrometers.

Politics

What will I study?

The course includes both UK and US Politics. The units covered have a broad range which include lively, relevant and controversial topics covering news and current affairs from the UK and the US. The course will help you understand how the UK is run and develops research, written communication and debate skills. It also helps grow your confidence. You will develop skills in all components of this subject including: the ability to comprehend and interpret political information, critically analyse and evaluate the areas of politics studied, construct arguments and explanations leading to reasoned conclusions. You will also learn how to identify parallels, connections, similarities and differences between aspects of the areas studied as well as developing the ability to construct and communicate arguments and explanations with relevance, clarity and coherence.

How will I be assessed?

Paper 1: Government & Politics of the UK. Written exam – 2 hours. This will be 33% of the overall A level and will include a mixture of medium length 'explain' and essay style questions.

Paper 2: Government & Politics of the USA and Comparative Politics. Written exam – 2 hours. This will be 33% of the overall A level and will include a mixture of medium length 'explain' and essay style questions.

Paper 3: Political Ideas. Written exam – 2 hours. This will be 33% of the overall A level and will include a mixture of medium length 'explain' and essay style questions.

Politics and your future career

Politics is an ideal A level if you are considering studying politics, sociology, ethics, advertising or journalism at university. It is highly regarded by employers in industries and graduate jobs would include working in the fields of politics, international organisations, public relations, public affairs consultation, the media, the government and roles within the civil service.

Additional requirements

Politics is an A level that you absolutely should want to study, if chosen. It will involve being ready and able to discuss all of the relevant and up to date politics of the day.



Find out more...

Watch a short clip of Neil Whitelaw discussing the benefits of studying Politics.

Entry requirements

5 GCSE passes at level 4 or above with English at level 5 or above. The ability to write clearly, concisely and extensively is essential.

Specialist facilities

An opportunity to visit the Houses of Parliament at some point during the course. An opportunity to meet and discuss and debate with a local M.P.

Psychology

What will I study?

Studying Psychology at this level is challenging and demanding. It encourages you to think for yourself about complex issues and to critically assess evidence from a range of sources. Studying Psychology helps you develop a deeper awareness of yourself and others and gives you a major insight into human behaviour.

Compulsory content of the course includes:

- Social Influence that considers why do we conform? Why do we obey?
- Memory that considers how can brain injury affect what we remember?
- Attachment that considers how significant are parent-child relationships?
- Psychopathology that considers what causes a phobia? How is it treated?
- Approaches in Psychology that considers to what extent does nature cause behaviour?
- Biopsychology that considers what is Alien Hand Syndrome and why does it occur?
- Research Methods that considers how do psychologists conduct research?
- Issues and debates in psychology that considers do humans truly choose their behaviour?

Optional elements of the course we study include:

- Relationships that consider peacocking, does it work?
- Schizophrenia that considers what causes this complex illness and how can it be treated?
- Forensic psychology that considers are we born good or evil?
- Addiction that considers is addiction a disease? What causes addiction?

Other optional elements of the course include:

- Gender
- Cognition and development
- Eating behaviour
- Stress
- Aggression

How will I be assessed?

There are three exam papers that will be taken at the end of Year 13 for the full A Level. Each exam is weighted to contribute 33.3% to the overall A Level grade. There are two exam papers for the AS accreditation, each paper is worth 50% of the overall AS Level. Should you opt for this, these exams would be taken in May of Year 12.

Psychology and your future career

Graduate jobs may involve clinical psychologist, counsellor, educational psychologist, forensic psychologist, health psychologist, HE lecturer, occupational psychologist, market research executive, personnel officer, teacher, social researcher, social worker, speech and language therapist, psychotherapist.



Find out more...

Watch a short clip of Nic Bush discussing the benefits of studying Psychology.

Entry requirements

The minimum qualifications required are 5 GCSE passes at grade 4 or above including English, Maths and Science (9-4).

The minimum requirement must also include a subject that requires extended writing at a grade 5 or above, such as GCSE English or History.

The minimum requirement must also include a subject that requires scientific and methodical thinking and analysis at a grade 5 or above, such as GCSE Science or Maths.

- You will also need an enquiring mind, an openness to others' views and a mature approach to what can often be controversial and sensitive issues.

Specialist facilities

The Psychology Department has dedicated rooms in Sixth Form. There is also a comprehensive Psychology book, journal and article collection in Sixth Form and in the Library. Staff regularly share relevant and interesting media to support your studies.

Spanish

What will I study?

The course will convert your GCSE pass to a high level of spoken and written grammatical accuracy, personal communication and intimate knowledge of Spanish speaking countries. At all times the culture of the relevant countries is highlighted. The emphasis is on studying the language by using Spanish in connection with in-depth study of topical issues. You will study technological and social change, looking at the multicultural nature of Hispanic society. You will study highlights of Hispanic artistic culture, including a focus on Spanish regional identity and the cultural heritage of past civilisations. There is also an opportunity to learn about aspects of the diverse political landscape of the Hispanic world.

How will I be assessed?

Paper 1 tests listening, reading and writing. This paper assesses aspects of Hispanic society, artistic culture in the Hispanic world, multiculturalism in Hispanic society, aspects of political life in Hispanic society and grammar. It contributes to 50% of the A Level grade.

Paper 2 is a writing exam that requires full answers in Spanish in response to a set text and a film. It contributes to 20% of the A Level grade.

Paper 3 is a speaking test. The exam is based on an individual research project related to one of four sub-themes i.e. aspects of Hispanic society or artistic culture in the Hispanic world or multiculturalism in Hispanic society or aspects of political life in Hispanic society. The speaking test contributes to 30% of the overall A Level.

Where could this take me?

Whatever your chosen career, possession of skills in one or more Modern Languages will, without any doubt, make you a more flexible, adaptable and mobile citizen of the Spanish-speaking world.

Spanish and your future career

- On average, people who use languages in their jobs earn 8% more.
- 75% of the world's population does not speak English at all.
- Employers will like you because you show you are confident & communicate well. People who speak another language get better jobs & salaries than those who only speak their own language.
- You will be speaking an international language.



Find out more...

Watch a short clip of Dave Ray discussing the benefits of studying Spanish.

Entry requirements

5 GCSEs grades 9-4 to include English GCSE at Grade 5 and 6 in Spanish.

Specialist facilities

Fully equipped Modern Language classrooms.

Sport & Physical Education

What will I study?

This course gives you an opportunity to immerse yourself in the world of sports and physical education, with the chance to perform or coach a sport (through the non-exam assessment component), and delve into the 'how?' and 'why?' of physical activity and sport. You will receive a well-rounded and full introduction to the world of physical education, sport and sports science. The combination of physical performance and academic challenge provides an exciting opportunity for students. Through the academic study you will gain the knowledge and understanding to improve yours and others' performance or coaching. This complete grounding in the subject provides a fantastic base from which to build when moving on to higher education, employment or further training.

How will I be assessed?

Component 1: Physiological Factors Affecting Performance
Component 2: Psychological Factors Affecting Performance
Component 3: Socio-cultural and Contemporary Issue
Component 4: Performance within Physical Education

You will be entered for the AS assessments, as it is proven that this is an excellent preparatory tool for the final assessments at the end of the second year. Therefore you can opt to complete just an AS Level in this subject, but due to the vast amount of theory content that must be covered in the first year, we would strongly advise against this and recommend commitment to the full 2 year course.

Find out more...

Watch a short clip of Phil Roberts discussing the benefits of studying Sport & Physical Education.



Students have core practicals that are integral to the course and students will be examined on their ability to plan, analyse and evaluate experimental designs within the end of course assessments. Students have their practical skills assessed against the Common Practical Assessment Criteria and will be given a 'pass' if these are of the required standard. This Practical Endorsement will be reported alongside the results.

Sport and Physical Education and your future career

Non graduate jobs may include junior positions in sports clubs and gyms, administrative roles within a hotel and leisure complex, sports apprenticeships, etc.

Graduate jobs may include leisure/fitness centre manager, sports scientist, outdoor pursuits manager, teacher, HE lecturer, sports development officer, sports therapist, armed forces, health promotion, journalism, marketing, physiotherapist, police officer.

Former students have gained places on degree courses such as Sport Science, Physiotherapy, Dietetics and PE Teaching, at Bath, Brighton, Brunel, Chichester, Exeter, Gloucestershire, Leeds, Loughborough, Reading and Plymouth Marjon Universities, to name but a few.

Entry requirements

5 GCSE passes at grade 4 above to include GCSE English and Mathematics at grade 5, and ideally GCSE Science at grade 6. GCSE PE at grade 5 is also preferable, but not essential. (Student personality and character are very important and therefore students may still be accepted if they just miss out on a specific grade.) Students will need to be able to work independently and collaboratively when required, showing mutual respect and a commitment to achieve the highest standards in all aspects of the course.

Specialist facilities

- Students will have access to all College sports facilities.
- Extra-curricular trips are organised to ensure access to specialist, up-to-date protocols and equipment.
- The A Level PE teaching team are highly experienced in their areas of specialism and consistently complemented on their excellent standards of delivery.

OCR Level 3 Cambridge Technical Extended Diploma in

Sport and Physical Activity

What will I study?

If you opt to study the Extended Diploma (equivalent to 3 A levels) you will take 17 units across the two years, made up of mandatory and optional units. Below are a selection of the units you will study:

- Body systems and the effects of physical activity
- Sports coaching and activity leadership
- Performance analysis in sport and exercise
- Sports and exercise psychology and sociology
- Organisation of sports events
- Group exercise to music
- Nutrition and diet for sport and exercise
- Sports injuries and rehabilitation

The units you will cover will give you skills, knowledge and understanding related to key aspects which underpin how sport and physical activity is delivered and organised. You will also develop transferable skills that employers are looking for such as planning, communication, adaptability and leadership.



Find out more...

Watch a short clip of Phil Roberts discussing the benefits of studying Sport & Physical Activity.

How will I be assessed?

- Written assignments
- 4 externally set exams across the two years
- Practical assessments (Generally the practical assessments will be carried out in the form of a witness statement alongside video footage.)
- Presentations
- Video footage

Sport and Physical Activity and your future career

This qualification is not just about being able to play sport or deal with elite athletes; employers need people who are able to develop sports skills for teams and individuals, work with clients and participants to improve their fitness and change their lifestyles and monitor progress and improvement over time, adapting practices and approaches to suit the needs of individuals. Therefore, this qualification will develop your skills in preparation for employment in sports coaching, either through an apprenticeship or directly into work.

Entry requirements

5 GCSEs at grades 4 or above including English and Maths. Possible entry through either a BTEC First Diploma in a related subject qualification or GCSE PE.

Students will need to be able to work independently and collaboratively when required, showing mutual respect and a commitment to achieve the highest standards in all aspects of the course.

Specialist facilities

Students will have access to the computer suite in PE1, PH4 (laptops) and PH7, and all College sports facilities/equipment, together with specialist texts to support their learning.

Sociology

What will I study?

AS Sociology is taught over one academic year (as a separate course and as part of the full A level) and assessed at the end of the year (typically, Year 12).

The content of the AS course mirrors that required for year 1 of a full A level in Sociology. However, A level students will be examined on this content at the end of the year 2 (typically, the end of Year 13). The A level terminal assessments will require that students demonstrate a deeper understanding of the content of the modules in which they are assessed.

Topics include:

Work, poverty, welfare, and research methods; Education with research methods in context; Beliefs in society and Crime and deviance with theory and methods.

How will I be assessed?

At AS level there will be two examinations each of which accounts for 50% of the total marks.

At full A level, there will be three examinations, each of the three papers account for 33.3% of the total marks.

Sociology and your future career

Non graduate jobs may include some administrative roles in social services, prison service or in a non-governmental organisation. Graduate jobs may include education, probation officer, social /community work, social research, social worker, counsellor, housing manager, prison governor and welfare rights adviser.

This is obviously merely a sample of career pathways in which Sociology can play a valuable part.



Find out more...

Watch a short clip of Jared Baldwin discussing the benefits of studying Sociology.

Entry requirements

5 GCSEs grades 9-4. GCSE grade 5 or above in Geography or History, or Religious Studies.

GCSE grade 5 or above in English and Mathematics

Specialist facilities

The Sociology Department has dedicated rooms on the upper floor of the Atrium building. There is also a comprehensive Sociology book collection at both the Atrium classrooms and in the Library. Additional books, films and articles are available.

Design. Engineer.
Construct!



Level 3 Diploma in Design, Engineer, Construct!

The Digital Built Environment

What will I study?

The Digital Built Environment (Design Engineer Construct) is an accredited level 3 learning programme for 6th Form students and has been expertly developed to create and inspire the next generation of Built Environment professionals. Through a project-based approach, DEC applies pure academic subjects to the latest construction industry practices. The result is young people with real-world scenario experience and employability skills that can give them a step ahead of the competition as they take the next steps into their Careers.

You will produce a detailed portfolio that including information required to turn a design idea into a reality. During the course you will sampling being a Architect, Project manager, Planning director, Land surveyor, CAD Technician and many other potential careers within the built environment section.

How will I be assessed?

50% examination and 50 % course work completing 6 units of work:

Unit 1: Defining a sustainable construction project

Unit 2: Developing a sustainable construction project

Unit 3: Investigate design, structural and service aspects of a sustainable construction project

Unit 4: Deliver design, structural and services aspects of a sustainable construction project

Unit 5: Lifecycle and financial planning for a sustainable construction project

Unit 6: Evaluating and documenting a sustainable construction project

Find out more...

Watch a short clip of Sam Westaway discussing the benefits of studying DEC Cert Dip.



What will I do in DEC?

- Research and generate a project design brief
- Identify and analyse site information required for the design phase
- Create digital concept designs on paper and via CAD (computer aided design)
- Build a 3D BIM Model (Building information Modelling) using industry standard software.
- Prepare information and resources needed to support a planning application.
- Present and evaluate completed project

DEC and your future career

The built environment sector is in need of young people to be the industry's bright new stars. With DEC! you have the ideal platform to fill that need and build a successful career.

tquk.org/design-engineer-construct

designengineerconstruct.com

goconstruct.org

Entry requirements

5 GCSE passes at grade 4 or above to include Science with English and Mathematics at grade 5 or above.

Confidence and competence at using a computer essential.

Specialist facilities

DEC is based at Atrium studio, where we have excellent IT facilities with access to Adobe design software and CAD software.

king

The collage features several distinct posters and artworks:

- Walk the Line:** A poster with a silhouette of a person walking, with the text "WALK THE LINE" and "THE GREAT AMERICAN SONGBOOK" below it.
- The Big Space Conference:** A poster with a large white circle and a rocket, with the text "THE BIG SPACE CONFERENCE" and "TODAY'S DREAM TOMORROW'S REALITY" below it.
- West World:** A poster with silhouettes of a cowboy and a figure holding a gun, with the text "West World" above them.
- Rodeo Cop:** A poster with a silhouette of a person holding a gun, with the text "RODEO COP" above them.
- Stay home:** A poster with a silhouette of a person holding a sign that says "Stay home", with a church and a cityscape in the background.
- Other posters:** A poster with a large white circle and a rocket, a poster with a large white circle and a rocket, a poster with a large white circle and a rocket, and a poster with a large white circle and a rocket.

Graphic Communication

What will I study?

Graphic communication will give you the skills to produce personal creative work and develop your understanding of graphic design. You will develop your knowledge of materials and techniques, and the skills to communicate ideas and information visually. It will help you to develop an effective personal visual language and develop your understanding of historical and contemporary influences on design. Graphic communication opens the door to a large number of fascinating and rewarding specialisms and careers in industry, commerce and the media.

How will I be assessed?

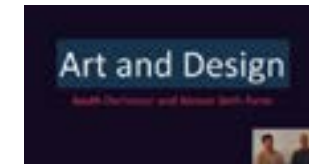
Component 1: you will develop practical work for a personal investigation into an idea, issue, concept or theme supported by written material. This will count for 60% of your total A-level marks.

Component 2: you will produce personal work in response to one of eight starting points, set by the exam board, which will count for 40% of your total A-level marks.

Graphic Communication and your future career

Studying a graphic communication related degree at university will give you all sorts of exciting career opportunities, including:

Advertising, Animator, Designer for film and television, Exhibition designer, Graphic designer, Illustrator, Interior and spatial design, Marketing, Publishing, Production designer, Scientific or medical illustrator, Studio manager, Teacher, Typographer, Web, app or games designer.



Find out more...

Watch a short clip of Ben Mukherjee and Ed Tomlin discussing the benefits of studying Art and Design, including Graphic Communication

Entry requirements

5 GCSE grades 9-4 or above. Students must have at least a grade 5 GCSE in Art and Design or related subject area. It is important that applicants demonstrate a keen interest and commitment to design.

Specialist facilities

Graphic Design is delivered by the Atrium Studio School. The Atrium offers an inspiring learning environment that stimulates creativity and collaboration. Based in a new building, Atrium's state-of-the-art facilities will be accessed via a dynamic mix of break-out spaces and studio rooms. Shared facilities with South Dartmoor Community College, will allow further access to dedicated art rooms. The art department computers are installed with Adobe design software (including InDesign, Illustrator and Photoshop). Large format printer, negative scanner and flatbed scanner, dark room and photographic facilities are also available.

”
There are 360°
so why stick to one?



Three-Dimensional Design

What will I study?

Three-dimensional design is about looking, learning, thinking and communicating ideas. It inspires creative thinkers, problem solvers and people who enjoy making. Three-dimensional design is the ideal opportunity to explore ideas and develop skills and is a great first step for those who wish to follow a course in art and design at university. However, its balance of practical, academic and analytical skills are widely transferable and students intending to study courses unrelated to art and design find that it complements their other subject choices. A course in three-dimensional design will enable you to select appropriate materials and learn how they fit together, develop an understanding of scale and experiment with texture and surface finish.

How will I be assessed?

Component 1: you will develop practical work for a personal investigation into an idea, issue, concept or theme supported by written material. This will count for 60% of your total A level marks.

Component 2: you will produce personal work in response to one of eight exciting starting points, set by the exam board, which will count for 40% of your total A level marks.

Three-Dimensional Design and your future career

Studying a three-dimensional design related degree at university will give you all sorts of exciting career opportunities, including:

Architect, Jewellery designer, Ceramicist, Landscape architect, Design consultant, Model maker for film/TV, Exhibition designer, Product designer, Environmental designer, Teacher, Furniture designer, Toy designer, Interior designer, Set designer.



Find out more...

Watch a short clip of Ben Mukherjee and Ed Tomlin discussing the benefits of studying Art and Design, including Three-Dimensional Design.

Entry requirements

5 GCSE grades 9-4 or above. Students must have at least a grade 5 GCSE in Art and Design or related subject area. It is important that applicants demonstrate a keen interest and commitment to design.

Specialist facilities

Three-Dimensional Design is based at Atrium studio, where we have excellent IT facilities with access to Adobe design software and CAD software. The studio classrooms are light and spacious, which provides a great environment for your creative design work. There is a well-equipped workshop area with tools and machinery. Atrium also has a laser-cutter and large format printer.

